

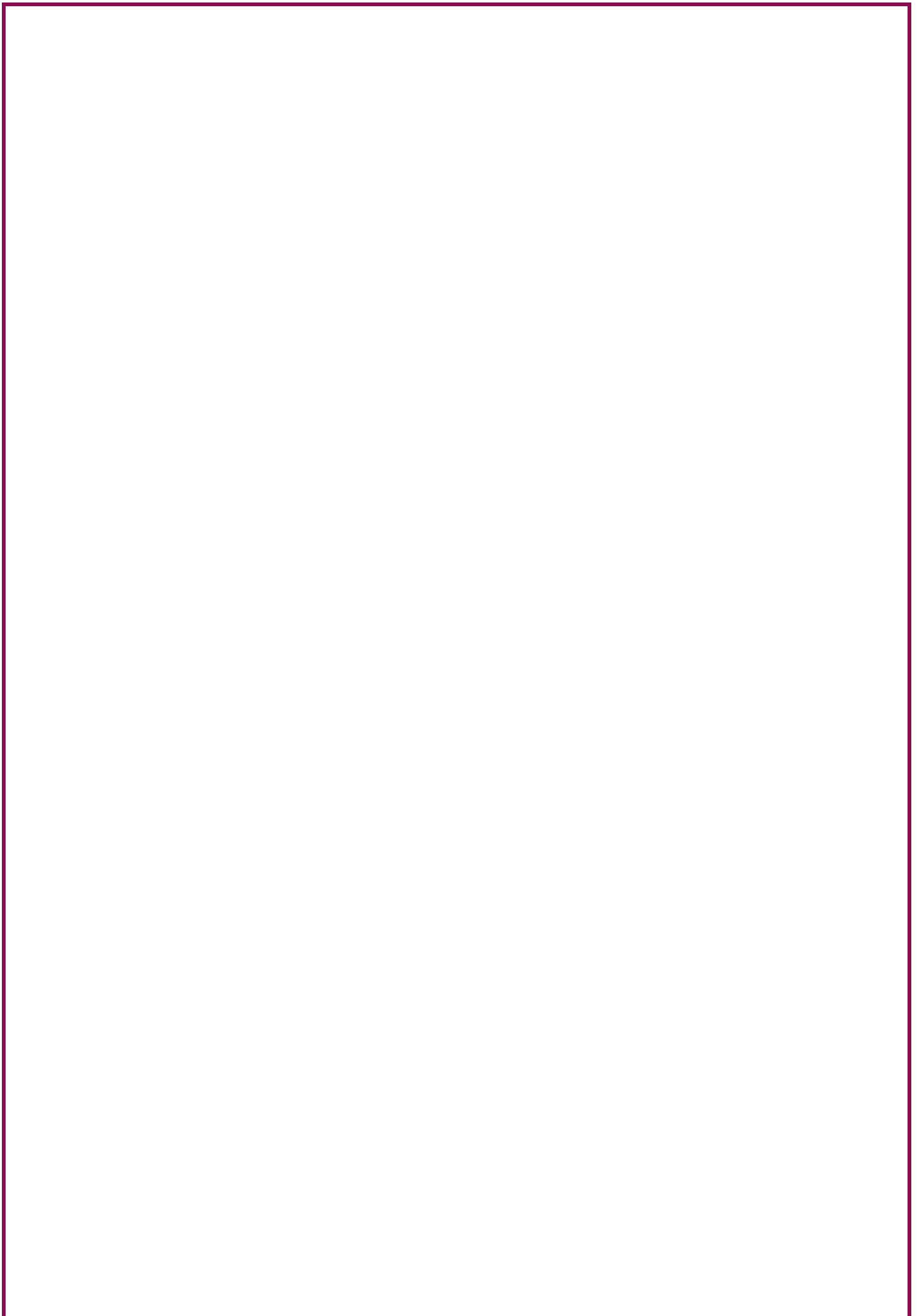
# LIVING IN LUXEMBOURG 2

**This booklet belongs to**

**Full name**

**Class**





Unit	Topic	Page	
V.	A taste of Luxembourg	1. 'Schéiferei an Dottësch'	4
		2. Ostrich farm 'A Nommesch'	6
		3. Traditional dishes	8
		4. For the sweet-toothed	10
VI.	Luxembourg wildlife	1. Harmless and less harmless creatures	12
		2. Bats – bat magic and folklore	13
		3. Bats	15
		4. 'Eichenprozessionsspinner'	17
		5. Foxes	18
		6. Jelly fish	19
		7. Slow or blind worm	20
		8. Wolves – 'Carnivorous beasts acquiring a taste for human flesh': when wild wolves still plagued Luxembourg	22
		9. Wolves	24
VII.	Medical services	1. Doctena	27
		2. The Family Planning	30
VIII.	Culture	1. Free music schools	35
		2. Hariko and arts	37
IX.	Science	1. Science – where to explore it	41
X.	New technologies and communication	1. Digital inclusion – receiving a computer and computer courses for free	45
		2. myeduguichet.lu	48
		3. uni.lu - Luxembourg's digital ambitions	50
XI.	Politics	1. Luxembourg – a constitutional monarchy	53
		2. Luxembourg and the EU	55
		3. Voting rights for foreigners	56
XII.	Media	Luxembourg media guide	58
XIII.	Values	1. Gender equality – pay gap	60
		2. Gender equality – the reality	61
		3. Domestic violence	64
		4. Domestic violence – the police	66
		5.. LGBTQ+	68
		6. Euthanasia	70
XIII.	Religion	1. Religion in Luxembourg	73
		2. Churches in Luxembourg struggle with separation from State	76
Appendix 1		Transcript: At the chemist's	78
Appendix 2		Resources for Victims of domestic violence	79

# V. A taste of Luxembourg

## 1. 'Schéiferei An Dottësch'<sup>1</sup>

[HOME](#)[ABOUT](#)[EVENTS](#)[OUR PRODUCTS](#)[NEWS](#)[CONTACT](#)

### Our products

Home / Our products



#### Yoghurts

Our yoghurts are made from ewes' milk. They are basically plain yoghurts, but they can be flavoured with seasonal fruit or other flavourings according to your taste.

#### Ice creams

Our homemade ice creams owe their unique flavours to the top-quality ingredients we use: fresh milk from our pasture-raised ewes, seasonal fruit grown in our own orchards, natural vanilla, cocoa powder etc.

Alongside the traditional flavours (such as vanilla, chocolate or coffee), which are on offer all year round, we produce ice cream made with seasonal fruit (such as strawberries or mirabelle plums) or special flavourings, such as speculoos, for instance.



#### Our prices

Ice cream made from ewes' milk (seasonal and traditional) - 950 ml: € 16,00

Ice cream made from ewes' milk (seasonal and traditional) - 480 ml: € 8,50

Plain yoghurt - 180 ml € 2,50






f

 Bergerie An "Dottësch"  
9 A r. du Schlammestee  
L-5770 Weiler-la-Tour  
Luxembourg  
 [\(+352\) 26 67 22 17](tel:+35226672217)  
 [\(+352\) 621 181 707](tel:+352621181707)  
 [dottesch@pt.lu](mailto:dottesch@pt.lu)

To obtain our newsletter

Opening hours:

Thursday: 4 – 6 pm | Friday: 4 – 7 pm | Saturday: 3 – 7 pm (by appointment)

[ABOUT](#)  [EVENTS](#)  [OUR PRODUCTS](#)  [NEWS](#)

Mentions légales

Plan du site

Politique de protection des données

Copyright 2022



<sup>1</sup> Inspired by [Produits laitiers pur brebis | Bergerie An "Döttesch" - bergerie-an-dottesch.lu](https://www.bergerie-an-dottesch.lu/fr-FR/Page/Nos-produits)  
<https://www.bergerie-an-dottesch.lu/fr-FR/Page/Nos-produits>

**Decide if the following statements are true or false.**

**Tick the respective boxes. If there is not enough information in the text, tick?**

	<b>True</b>	<b>False</b>	<b>?</b>
1. The 'Schéiferei's' offer varies depending on the season.	<input type="checkbox"/>	<input type="checkbox"/>	<input type="checkbox"/>
2. The 'Schéiferei' uses normal milk to produce their yoghurts and ice-cream.	<input type="checkbox"/>	<input type="checkbox"/>	<input type="checkbox"/>
3. The 'Schéiferei' adapt their products to their customers' desires.	<input type="checkbox"/>	<input type="checkbox"/>	<input type="checkbox"/>
4. The 'Schéiferei' have orchards where they grow fruit.	<input type="checkbox"/>	<input type="checkbox"/>	<input type="checkbox"/>
5. The 'Schéiferei' produce delicious cheese.	<input type="checkbox"/>	<input type="checkbox"/>	<input type="checkbox"/>
6. The 'Schéiferei' is located in Weiler-la-Tour.	<input type="checkbox"/>	<input type="checkbox"/>	<input type="checkbox"/>
7. You can buy Mirabelle plum ice-cream all year round.	<input type="checkbox"/>	<input type="checkbox"/>	<input type="checkbox"/>
8. It is cheaper to buy ice-cream in bulk (in a big quantity).	<input type="checkbox"/>	<input type="checkbox"/>	<input type="checkbox"/>
9. The 'Schéiferei' sell their products on the farm, but also at events, at markets and in supermarkets	<input type="checkbox"/>	<input type="checkbox"/>	<input type="checkbox"/>
10. The 'Schéiferei' is open for visitors at the weekend.	<input type="checkbox"/>	<input type="checkbox"/>	<input type="checkbox"/>



## 2. Ostrich farm 'A Nommesch'<sup>2</sup>



# STRAUSSEFEST

## OSTRICH FESTIVAL

### DATE

14<sup>th</sup> & 15<sup>th</sup> MAY 2022

### TIME

From 11.00 am to 07.00 pm

### VENUE

Straussefarm Contern  
38, rue des Prés  
L-5316 Contern

### Big sale of products made from ostriches

- Steak, burgers, sausages
- Eggs
- Leather goods (purses, wallets, bags, belts, shoes...)
- Jewellery

### Fun and entertainment



ZAK

#### For the young ones

- Workshops with Zak (Zesummen Aktiv)
- Bouncy castle
- Pony rides

#### For all ages

- Guided tours of the farm every half an hour
- Exhibition of painted ostrich eggs

### Food and drinks

- Ostrich steak with sautéed potatoes Luxembourg style and salad
- Ostrich burgers and sausages
- Veggie burgers and sausages
- Home-made fruit pies and coffee
- Waffles made from ostrich eggs
- Soft drinks (mineral water, coke, fruit juices)
- Luxembourg crémant, beer, wine

### Live music from 03.00 pm on both days

- FADE TO GRAY on Saturday
- VOCALINO ON TOUR on Saturday



<sup>2</sup> Inspired by <https://www.straussefarm.lu/>

Complete the sentences below by ticking the right box (a, b or c)



1. You are supposed to read and understand

- a. an event poster
- b. a web page
- c. a newspaper article



2. The ostrich festival is

- a. an afternoon event
- b. a one-day event
- c. a two-day event



3. The event finishes at

- a. 3 o'clock in the afternoon
- b. 7 o'clock in the evening
- c. 11 o'clock at night



4. The event takes place

- a. on a farm
- b. in a field
- c. on a meadow (= prés)



5. There are workshops for

- a. children
- b. adults
- c. everybody



6. People **CANNOT** get

- a. leather goods made from ostrich
- b. ostrich egg art
- c. ostrich farming products



7. Visitors can taste

- a. barbecued ostrich products
- b. gourmet food made from ostrich
- c. South African cuisine



8. There are bands playing at

- a. all day long
- b. at lunchtime
- c. in the afternoon



### 3. Traditional dishes

#### DINING & DRINKING - KNOW THY FOOD

## The Grand Duchy's Best Known Dishes<sup>3</sup>

RTL | Update: 29.07.2021 16:27

**You live and work in Luxembourg, or at least work, and you've likely eaten in many of Luxembourg's restaurants. But how many Luxembourgish dishes have you tried, or even know?**

When you think of food in Luxembourg, some of the first things that spring to mind are large portions, plenty of meat, a fair amount of fish, heaps of potatoes and piles of beans. Lashings of cream and wine are also at the front of the pantry. Indeed much of Luxembourg's plated offerings reflect the country's traditions, that being a heavy reliance on farming and history.

These are perhaps the most well known dishes that Luxembourg has to offer:

#### **Bouneschlupp**



Bouneschlupp - one of the most classically classic Luxembourgish dishes. This is a soup made with green beans, potatoes, smoked bacon, and onions. Regional variations of this dish may include additional ingredients such as carrots, leeks, or celery. Metworst or other types of heavily spiced sausages may be added as well.

#### **F'rell am Rëisleck**

Luxembourg trout in a delicious Riesling sauce is a lovely main dish. The abundance of trout in the rivers of Luxembourg means that this is a popular dish in many eateries. The fish is fried first in a bit of butter and batter and then added to that wonderful sauce. A perfect summer meal.



#### **Friture de la Moselle**

This traditional Luxembourgish dish hits home as this is essentially fried fish in a flour batter. If you've ever had the classic fish and chips in Britain, you are sure to enjoy the Friture de la Moselle - especially popular during the Octave and Schueberfouer.

It is eaten with a drop of lemon and you can always add some fries on the side.

#### **Gromperekichelcher**

The daddy of the list (or, if we must tread carefully, the big cheese). Luxembourg potato fritters called Gromperekichelcher are synonymous with living in the 'Burg'. They are crispy fritters made of grated potatoes, onions, shallots and parsley, held together with some flour and eggs. Typically these are made flat and ideally should be formed like a small pancake. Can be served with apple sauce and pair well with Trout in Riesling sauce (see above).



<sup>3</sup> Adapted from <https://today.rtl.lu/luxembourg-insider/dining-and-drinking/a/1628340.html>



### Huesenziwwi

During the game/hunting season — October to December — you might find Huesenziwwi on the menus of some Luxembourg restaurants. Essentially wild hare stew, the hare is first marinated between 48 and 72 hours and is then fried in lard and flambéed with cognac. The hare is served with a sauce made from hare or calf's blood, red wine, and even more cognac.

### Judd mat Gaardebounen

A savory dish of smoked pork collar and broad beans is, arguably, one of the country's most widely recognized national dishes. Largely associated with the village of Gostingen in the south-east of the country, this is where the inhabitants have earned the nickname of Bounepatscherten, reportedly as a result of their excellent broad beans.



### Paschtéit or Bouchée à la Reine

Possibly, maybe, half-inched from neighbouring France, Bouchées à la Reine are very small flaky pastries that are essentially vol-au-vents - something Brits will recognize from pretend posh parties. Usually including chicken breast, [...], the pastry is garnished with a dollop of a savoury mixture bound together with a creamy white sauce.

### Rieslingspaschteit or pâté au Riesling

This is a traditional Luxembourg dish – a wonderful meat pie into which a fragrant Riesling jelly is poured and left to set. For some (this editor, for example) the cold jelly is an absolute deal-breaker. For others, and there are many, it is quite a delicacy.'



### Quetschentaart

Quetschentaart, one of the classics of Luxembourgish baking. The simple fruit tart is a traditional autumn treat, and you'll find it at bakeries across the country at this time of year. Damson tart is made with 'Quetschen', which translates into damson, but it's not really (exactly) the same.'

### Note

**For more information on local food, food shopping, go to**

- [#regionalsaisonal – SOU FRËSCH, SOU LËTZEBOURG](https://regionalsaisonal.lu/en/)
- [Luxembourg specialties, buy and eat local \(justarrived.lu\)](https://www.justarrived.lu/en/practical-information/luxembourg-culinary-specialties-local-products/)
- [From farm to table: eating fresh, organic and local in Luxembourg \(justarrived.lu\)](https://www.justarrived.lu/en/practical-information/markets-local-producers-luxembourg/)

## 4. For the sweet-toothed

Anne<sup>4</sup> Faber is a famous food journalist and cookbook author from Luxembourg. Read what she writes about different Luxembourg pastries on her website. You will also find the respective recipes on the website.

### Bamkuch



*‘Bamkuch’ is reserved for life’s major occasions, and it has a special place in every Luxembourger’s heart. I had a big one for my first Holy Communion and it is the country’s most popular wedding cake. Its name translates as ‘tree cake’ because, when the classic log-shaped version is cut open, you see the baked rings like the rings of a tree trunk.*

*Making Bamkuch the traditional way at home is virtually impossible, unless you happen to have a horizontal spit in your kitchen: the cake is made by drizzling batter onto the spinning spit, grilling layer after layer.’*



### Boxemännchen

As for ‘Boxemännchen’, she writes

*‘In December all the bakeries in Luxembourg sell these cute little men- and more recently women- shaped brioche, called a Boxemännchen! It’s the perfect breakfast treat around Christmas time, and it’s really not hard to make!’*

### Pretzels

*‘Luxembourg has lots of quaint traditions, but above all, ‘Bretzel-Sonnden’ is one really lovely example. Every year, on the third Sunday of Lent, we celebrate ‘Pretzel Sunday’. Here, a man should offer his beloved a sweet pretzel. If she accepts, she in return will have to give her man a chocolate Easter egg for Easter. If she refuses, she gives him a basket – hence the Luxembourgish expression ‘hie krut de Kuef’ (he got the basket) if you get dumped...*

*In leap years, the tradition reverses. Then, the woman is due to offer a pretzel in return for an Easter egg. It’s said that in old times, ‘Pretzel Sunday’ set the seal on many marriages.’*



### Verwuerelter (Fuesentkichelcher)



*‘As soon as gloomy January is over, Luxembourg dives right into festive mode with the start of Fuesent – carnival season. Besides fancy dress parties and cavalcades across the country, carnival is really the time to head to your local bakery and try out Verwuerelter, which are only around at this time of year. Verwuerelter are deep-fried pastry knots dusted with icing sugar. They’re also fondly called Verwuerelt Gedanken, “scrambled thoughts” – the origin behind this curious nickname remains unknown to me.’*

<sup>4</sup> Adapted from [Anne's Kitchen \\*Anne's Kitchen \(anneskitchen.lu\)](https://www.anneskitchen.lu)

Which of the following dishes is a ...

Starter

Main course

Dessert

Snack

Which of them is likely to contain pork meat?

---

---

---

Which of them could be served to a vegetarian, i.e. which of them does not contain any meat or fish?

---

---

---

Which of them could be served to a vegan, i.e. which of them does not contain any animal products?

---

---

---

Do you know any drinks produced in Luxembourg? Can you name them (kind of drink, brand)

Soft drinks

Alcoholic drinks

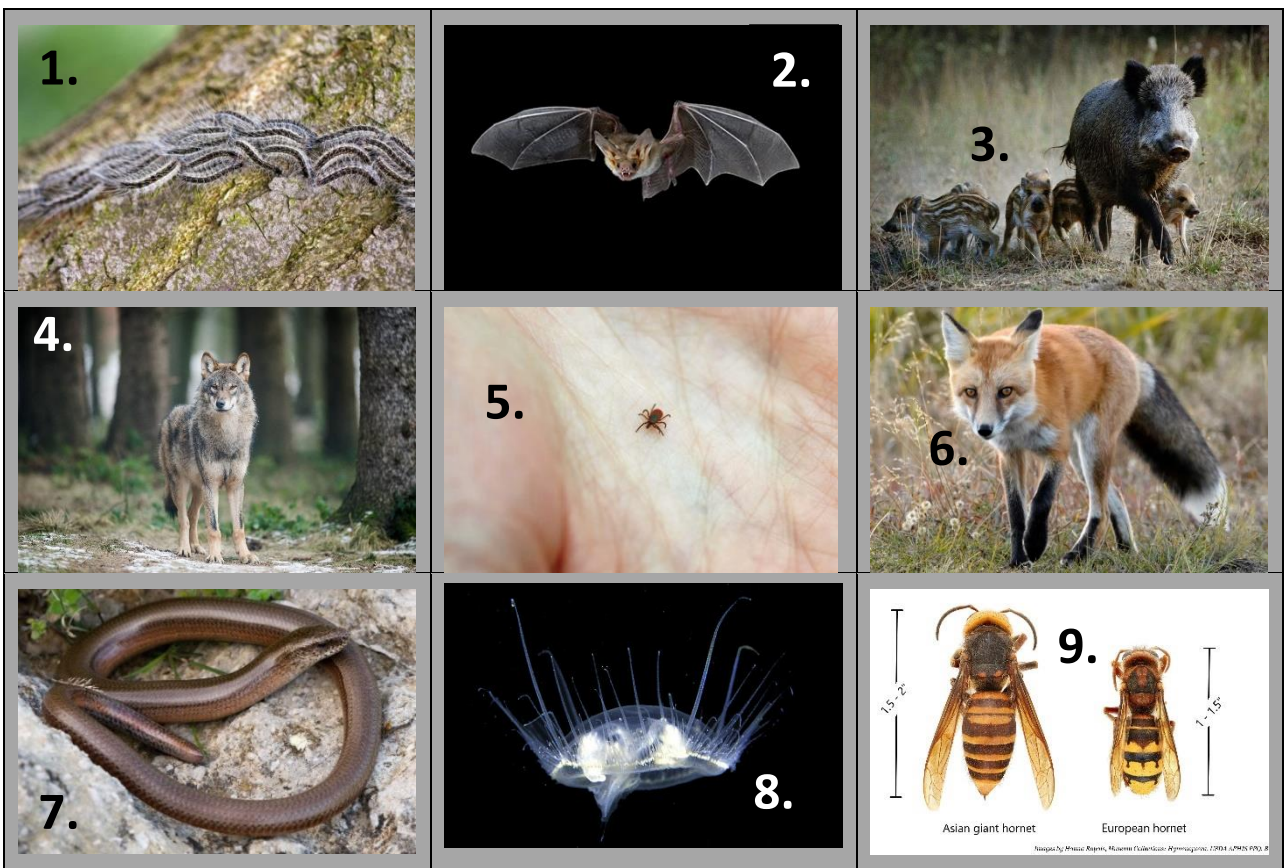


# VI. LUXEMBOURG WILDLIFE

## 1. Harmless and less harmless creatures

Imagine you would meet one of the following animals on a walk outside or a swim in a lake.  
Discuss with your partner the following questions.

- What kind of animal is it?
- Would you feel threatened? Why?
- What kind of danger does the animal represent?
- How would you react?
- Which one are you most likely to encounter?
- Which one are you least likely to encounter? Why?



Write down important information.

---

---

---

---

---

---

---

---

## 2. Bats - bat magic and folklore<sup>5</sup>

By [Patti Wigington](#)

Updated on August 22, 2019

**Fill the gaps (1-20) with the correct form of the past simple of the verbs in brackets (active or passive).**

In many parts of the world, once the sun begins to set, bats emerge from their resting places and zoom around outdoors, hunting for sustenance.



\_\_\_1\_\_\_ (you / to know)?

Bats bounce sounds off their surroundings, and this allows them to fly in completely dark conditions.

From a magical standpoint, bats are associated, in many cultures, with death and dying, communication and the spirit world. This makes them perfect representatives of Samhain (= the time when the veil between our world and the spirit realm is thin).

### Bats in Myth and Legend

Already one of the fables attributed to the ancient Greek storyteller Aesop (620 – 564 BCE) *The Birds, the Beasts and the Bat* tells the story of a bat that \_\_\_2\_\_\_ (not can / to choose) sides in a potential war and, when peace \_\_\_3\_\_\_ (to come), neither side \_\_\_4\_\_\_ (to want) to accept him.

During the Middle Ages, residents of western Europe and England \_\_\_5\_\_\_ (to believe) that bats spread disease. This is most likely because of the bat's similarity to the rat, which \_\_\_6\_\_\_ (usually / to blame) for the spread of plague. Because many people \_\_\_7\_\_\_ (to believe) in witchcraft during this time, the bat \_\_\_8\_\_\_ (to associate) with witches, dark magic, sorcery, and even talking to the dead. People in rural Scotland and northern England \_\_\_9\_\_\_ (to suspect) bats of being messengers between witches and the devil.

Centuries later, during the Victorian era, Bram Stoker \_\_\_10\_\_\_ (to write) *Dracula*, which \_\_\_11\_\_\_ (to combine) mysterious bats with a shape-shifting vampire.

While Europeans \_\_\_12\_\_\_ (to be) busy associating bats with witches and dark magic, the Mayans \_\_\_13\_\_\_ (to celebrate) a god named Camazotz. He \_\_\_14\_\_\_ (to be) a monstrous creature with the head and wings of a bat and the body of a man and \_\_\_15\_\_\_ (to be) associated with human sacrifice. For explorers like Cortez and his conquistadors, with European heritage and background, a bat god like Camazotz \_\_\_16\_\_\_ (to be) absolutely terrifying.

When bats appear in Native American folklore of the United States and Canada, their most important feature is usually their intermediate appearance between birds and mammals, either causing the bat to be rejected by one or both groups. Like Americans today, some Native American tribes mistakenly \_\_\_17\_\_\_ (used to / to believe) that bats \_\_\_18\_\_\_ (to be) more dangerous than they really are. Some tribes \_\_\_19\_\_\_ (to think) that bats \_\_\_20\_\_\_ (to feed) on people.

---

<sup>5</sup> <https://www.learnreligions.com/bat-magic-and-folklore-2562685>

The bat is also seen as a trickster in some societies, particularly in North American tribal cultures. Like Coyote, the bat often appears in cautionary tales. However, the bat is also associated with clarity of vision and intuition, perhaps due to the creature's ability to fly about at night when other animals are sleeping.

In Eastern cultures, there tends to be a very different view of bats. Rather than seeing them as harbingers (= forerunners) of death or symbols of black sorcery as Western societies do, people in China honour the bat as a symbol of happiness and long life. Five bats in a group together are a five-fold blessing: financial security, longevity, good health, a virtuous life, and a natural death.

***Answer the questions in your own words.***

1. Which parts of the world (continents) do bats live in?

---

2. When are bats active?

---

3. Why are bats 'a perfect representative of Samhain'?

---

4. How were bats perceived in the Middle Ages?

---

5. Who is Dracula?

---

6. Who is Camazotz?

---

7. How are bats perceived in North America?

---

8. Where are bats perceived positively?

---

### 3. Bats

**Fill the gaps (1-20) with the correct form of the present simple of the verbs in brackets.**

Bats have been around for 50 million years. The second largest order of mammals after rodents, bats comprise about 20% of all classified mammal species worldwide, with over 1,200 species.



Bats are the only mammals that can fly. People used to think that bats were birds without feathers, but there is no such a thing as a featherless bird.

**What \_\_\_1\_\_\_ (bats/to look) like?**

Bats come in different sizes, from the smallest bats such as the tiny bumblebee bat to the largest bats such as the fruit bats and the flying fox with a wingspan as long as an average man (1.7 m).

**Where \_\_\_2\_\_\_ (bats/to live)?**

Bats can be found all over the world; in forests, deserts, jungles and cities but except where it is very, very hot or really, really cold. They live on all continents except Antarctica.

Bats \_\_\_3\_\_\_ (not to live/only) in caves; in fact, there are many different places they live. They \_\_\_4\_\_\_ (to sleep) in trees, mines, under bridges, in bushes, and even in old buildings or barns. Some tiny South American bats \_\_\_5\_\_\_ (to make) tent-like shelters out of palm tree leaves.

Bats that used to only live in caves have adapted to living in cities now. The largest bat colony of bats living in a city is under the Congress Avenue Bridge in Austin, Texas. There are about 1.5 million bats there.

**How \_\_\_6\_\_\_ (bats/to live)?**

Most bats are nocturnal, which \_\_\_7\_\_\_ (to mean) that they come out at night and feed at night too. If you go looking for them during the day, you'll probably find them all snoring while they sleep in their caves or in trees. They sleep upside down. Bats are quite friendly creatures and they quite like having sleepovers in huge groups in caves. They obviously don't like to be alone.

**What \_\_\_8\_\_\_ (bats/to eat)?**

Many bats are insectivores. Most of the rest are frugivores. Only a few species, such as vampire bats feed on blood from other mammals like cows. Bats that eat insects depend a lot on sound and they've got super awesome hearing skills to find food in the dark.

**How \_\_\_9\_\_\_ (bats/to breed)?**

During spring, bats \_\_\_10\_\_\_ (to return) from migration or \_\_\_11\_\_\_ (to wake up) from hibernation and the ladies begin having baby bats which are called "pups". The pups are born without hair and are tiny and pink, but they grow up fast. Some of them are flying and hunting on their own within a month. Bats normally have one baby at a time and sometimes they'll have twins. However, they are born with strong claws and legs because they have to hold on to their mom when she's sleeping or hang on in the cave if she's out and about.

**How \_\_\_12\_\_\_ (bats/to perceive and to communicate) with their environment?**

Bats \_\_\_13\_\_\_ (can / to see) very well even if most bats only see in black and white. Bats have the best hearing of all land mammals: their ears are huge in comparison to their bodies – ideal to hear with. However, the most important means for bats to communicate and find objects is echolocation. They use echolocation as well as

dolphins. It is how bats 'see' in the dark. They make noises and wait for the sound waves to bounce back off objects, just like an echo. These noises \_\_\_14\_\_\_ (not / can / to heard) by human ears. If the sound \_\_\_15\_\_\_ (not to bounce back), it safe to push on and fly. Unbelievably echolocation \_\_\_16\_\_\_ (even / can / to tell) bats how far away something is.

**How \_\_\_17\_\_\_ (bats/to help) the ecosystem and humans?**

Tropical bats are important to rainforests. They pollinate flowers and drop seeds for many trees and bushes, such as bananas, mangos, nuts, dates and figs.

Bats' dung is used as a fertilizer known as 'guano'.

Bats consume insect pests, reducing the need for pesticides. A colony of just 150 big brown bats \_\_\_18\_\_\_ (can / to eat) up to 18 million or more root worms each summer. This saves crops from damage which means more food is available.

**What particularities \_\_\_19\_\_\_ (bats/to have)?**

Bat wings are quite complicated: they are made of two thin layers of skin stretched over the bat's arm and fingers – four fingers and a thumb. Their fingers are very long when you compare them to the size of the body. If our fingers were the same as bats, they'd be longer than our legs. When bats fly, they \_\_\_20\_\_\_ (just / not to flap) their wings up and down; it almost looks as if they're pulling their way through the air. Their wings get used for many things besides flying: they wrap them around insects or fruit to hold while they're eating.

**Other interesting facts**

In many cultures, bats are popularly associated with darkness, malevolence, witchcraft, vampires, and death. People often think that you can get sick from bats and that they carry rabies. They are in fact very clean and just like cats, groom themselves very well. They can get rabies, but so can all mammals.

***Are the sentences below true or false and tick the respective box. If there is not enough information in the text, tick '?'.***

	True	False	?
1. There are more than 1,200 species of bats.	<input type="checkbox"/>	<input type="checkbox"/>	<input type="checkbox"/>
2. Bats are birds.	<input type="checkbox"/>	<input type="checkbox"/>	<input type="checkbox"/>
3. There are bats in Siberia.	<input type="checkbox"/>	<input type="checkbox"/>	<input type="checkbox"/>
4. Bats normally have only one baby in their lifetime.	<input type="checkbox"/>	<input type="checkbox"/>	<input type="checkbox"/>
5. About 1.5 million bats live in Austin, Texas.	<input type="checkbox"/>	<input type="checkbox"/>	<input type="checkbox"/>
6. Guano is a fertilizer 'produced' by bats.	<input type="checkbox"/>	<input type="checkbox"/>	<input type="checkbox"/>
7. Bats can hold food with their wings.	<input type="checkbox"/>	<input type="checkbox"/>	<input type="checkbox"/>
8. Bats are more likely to get rabies than other mammals.	<input type="checkbox"/>	<input type="checkbox"/>	<input type="checkbox"/>

***For more information about bats, watch the following video***

<https://ed.ted.com/lessons/i-m-batman-amy-wray>

***Do the quiz about the video to see how much you remember.***

## 4. 'Eichenprozessionsspinner'<sup>6</sup>

RTL | Update: 17.06.2021 08:57

**Fill the gaps (1-20) with the correct form of the present simple of the verbs in brackets.**



AKA Oak processionary moth AKA irritating little wrigglers AKA bane (= misery, curse) of last summer.

Despite lock down, restricting movement (these pesky crawlers don't care a bit), ramblers (= walkers) might end up in the woods, or even unknowingly neighbouring a nest.

**Just what \_\_\_1\_\_\_ (to be) the oak processionary moth?**

The oak processionary moth \_\_\_2\_\_\_ (to be) a species of moth with caterpillars that nest on oak trees. The caterpillars \_\_\_3\_\_\_ (to be) covered in small hairs which \_\_\_4\_\_\_ (to be) rather painful and \_\_\_5\_\_\_ (can / to cause) serious allergic reaction in humans.

**To minimise health risks:**

Do not touch or approach oak processionary moth caterpillars or their nests. It's not that they get territorial, but rather the hairs are very fine and carry easy on the wind. Plus, there are loads of them.

Do not let children or animals touch or approach the caterpillars or nests, per above reasons.

Do not try and remove the caterpillars or nest yourself, per the obvious risks and above reasons.

**What exactly \_\_\_6\_\_\_ (they / to do) to the tree?**

Although there is just the one generation of oak processionary moth per year they \_\_\_7\_\_\_ (to do) a heck of a lot of damage considering how small they \_\_\_8\_\_\_ (to be). The caterpillars \_\_\_9\_\_\_ (to hatch) in spring and \_\_\_10\_\_\_ (to go) through several developmental stages, eventually developing the irritating hairs. The caterpillars \_\_\_11\_\_\_ (to descend) lower down the tree as they \_\_\_13\_\_\_ (to develop), stripping the tree of its leaves as they \_\_\_12\_\_\_ (to go), leaving it vulnerable and weakened. In summer, the wrigglers \_\_\_14\_\_\_ (to retreat) into nests and pupate, with the adult moths emerging in late summer. The moths \_\_\_15\_\_\_ (to hang) about for only four days in order to mate before popping off the mortal coil (= dying). The female \_\_\_16\_\_\_ (to lay) her fertilised eggs high in the treetop, and the cycle \_\_\_17\_\_\_ (to begin) again.

**What \_\_\_18\_\_\_ (oak processionary moth damage / to look) like?**

The oak processionary moth \_\_\_19\_\_\_ (to feed) and \_\_\_20\_\_\_ (to live) almost exclusively on oak trees.

An infested tree will display symptoms which include:

- Caterpillars in procession on the trunk nose-to-tail in late spring and early summer. The procession is sometimes arrow-shaped with one leader and rows of caterpillars following.
- Nests on trunks and larger branches of oak trees. They are made of distinctive white silken webbing that fades to a light brown colour.
- Dislodged nests on the ground near oak trees.

<sup>6</sup> Adapted from: <https://today.rtl.lu/your-luxembourg/knowledge-bites/a/1382905.html>

## 5. Foxes

**Fill the gaps (1-20) with the correct form of the present simple of the verbs in brackets.**

The fox is a member of the dog family and is thus a distant relative of the wolf. There are 21 species of fox. The red fox is the most famous one.



Foxes have a lifespan of 2 to 5 years, but some have lived to be 14 years old in captivity.

**What \_\_\_1\_\_\_ (foxes/to look) like?**

Most foxes are about the size of a large house cat. Foxes can range in height from 35 to 45 inches and weigh approximately 15 pounds.

**Where \_\_\_2\_\_\_ (foxes/to live)?**

Foxes \_\_\_3\_\_\_ (to adapt) very easily to their environment and can live in the countryside or in towns. They \_\_\_4\_\_\_ (to make) their home under sheds, in the hollow of trees, in ground burrows, and in wood piles. A fox's home is called a den.

**How \_\_\_5\_\_\_ (foxes/to live)?**

Foxes hunt mainly at night because they are nocturnal animals. They \_\_\_6\_\_\_ (not to live) in a pack. They \_\_\_7\_\_\_ (to live) and \_\_\_8\_\_\_ (to hunt) alone.

**What \_\_\_9\_\_\_ (foxes/to eat)?**

Foxes \_\_\_10\_\_\_ (to eat) almost anything, including berries, worms, spiders and even jam sandwiches. However, basically foxes are carnivores, which \_\_\_11\_\_\_ (to mean) they \_\_\_12\_\_\_ (to eat) meat. Their diet \_\_\_13\_\_\_ (to include) rodents, rabbits, insects and small birds. If they live near a farm, they will raid the hen house and steal the chickens. Foxes \_\_\_14\_\_\_ (to hide) food to eat later.

**How \_\_\_15\_\_\_ (foxes/to breed)?**

Foxes \_\_\_16\_\_\_ (to breed) between December and February. In the spring, the female may produce a litter of 4 to 5 cubs. The cubs no fur and are blind. The mother \_\_\_17\_\_\_ (to have) her litter in a den. She \_\_\_18\_\_\_ (not to leave) the den for the first two weeks after the cubs are born. The female \_\_\_19\_\_\_ (to nurse) her cubs. When the cubs are about 4 weeks old they begin to venture out of the den. They will leave their mother sometime between 6 and 12 months of age. A fox can mate when they reach 10 months of age.

**How \_\_\_20\_\_\_ (foxes/to perceive and to communicate) with their environment?**

A fox's hearing is so sharp they can hear a watch ticking 40 yards away. They can also hear something moving underground. Foxes use 28 different types of calls to communicate with each other.

**Other interesting facts**

he fox also has many similarities to a cat: they have vertical slit eyes and partially retractable claws; they are excellent tree climbers and mark their territory by the scent of urine. They also hunt like a cat. They stalk their prey just like cats. They often play with their prey before they kill it. A fox can run 30 miles per hour.

## 6. Invasive alien freshwater jellyfish *Craspedacusta sowerbii* spotted in Upper Sûre Lake<sup>7</sup>

Fill the gaps (1-20) with the correct form of the present simple or the past simple tense (active or passive) of the verbs in brackets.



At the beginning of September 2020, freshwater jellyfish \_\_\_1\_\_\_ (to spot) in the Upper Sûre Lake. Photographs of this jellyfish \_\_\_2\_\_\_ (to send) by divers from the CGDIS Frogmen Group to the Water Management Administration (AGE) and the Nature and Forest Administration (ANF). This observation \_\_\_3\_\_\_ (to make) it possible to confirm the presence of the *Craspedacusta sowerbii* jellyfish in the Upper Sûre Lake.

It is true that the term 'jellyfish' \_\_\_4\_\_\_ (to be) reminiscent of marine species with a stinging nature, which \_\_\_5\_\_\_ (can / to trigger) painful skin reactions, similar to a burn, on direct contact with the animal. The freshwater jellyfish, on the other hand, \_\_\_6\_\_\_ (to be) a harmless relative. Although it \_\_\_7\_\_\_ (to belong) to the group of cnidarians, it \_\_\_8\_\_\_ (to be) completely harmless to humans.

Originally from Asia, the freshwater jellyfish \_\_\_9\_\_\_ (can / to find) other parts of the world mainly due to the introduction of aquatic plants and fish. This invasive alien species \_\_\_10\_\_\_ (to be) no larger than 25 mm in diameter and \_\_\_11\_\_\_ (to prefer) calm, stagnant waters that warm up considerably in summer.

As this jellyfish \_\_\_12\_\_\_ (to require) temperatures often above 20°C over a long period of time, its appearance \_\_\_13\_\_\_ (to take) place from July to October with a peak observed from the end of August to the beginning of September.

It should also be noted that these jellyfish \_\_\_14\_\_\_ (to prefer) clean water. In the evening, they often \_\_\_15\_\_\_ (to come) to the surface of the water and \_\_\_16\_\_\_ (can / to be) observed there. They \_\_\_17\_\_\_ (also / can / to be) admired when diving at greater depths during the day. These jellyfish have also been reported in other surrounding areas. It is very likely that their proliferation will continue as the climate \_\_\_18\_\_\_ (to warm).

The problem of the appearance of blue-green algae (cyanobacteria), which is a real concern in many respects for the Upper Sûre Lake, is a phenomenon totally independent of the appearance of the freshwater jellyfish observed and described in this press release.

If you \_\_\_19\_\_\_ (to see) any jellyfish, you \_\_\_20\_\_\_ (can / to report) them at the following address: [peche@eau.etat.lu](mailto:peche@eau.etat.lu).

<sup>7</sup> Adapted from <https://neobiota.lu/invasive-alien-freshwater-jellyfish-craspedacusta-sowerbii-spotted-in-upper-sure-lake/>

## 7. The slow-worm or blind-worm



**Match the questions (1-15) with the answers (1-15).**

1. \_\_\_\_\_  
Slow-worms are reptiles. They are legless lizards, which is why they are often mistaken for snakes. However, they have eyelids and ear holes, which snakes do not have. They also have a rounded tongue, not a forked one.
2. \_\_\_\_\_  
Adult slow-worms grow to be about 50 centimetres long.
3. \_\_\_\_\_  
They are neither slow nor blind. Slow-worms can travel at speeds of up to 0.3 miles per hour.
4. \_\_\_\_\_  
Slow worms are carnivores, i.e. they eat other animals. They prey on a variety of invertebrates. such as snails, slugs, and small worms.
5. \_\_\_\_\_  
Predators of slow-worms include cats, dogs, and birds. When a slow-worm is in danger, it can detach its tail. The tail wriggles while the slow-worm makes its escape. The slow-worm can then grow back a new, shorter tail, which it cannot shed.
6. \_\_\_\_\_  
Slow-worms can live for 10 to 30 years. Slow-worms tend to live longer than other lizards, reaching a total lifespan of over 30 years outside of captivity.
7. \_\_\_\_\_  
In gardens they risk being killed by cats.
8. \_\_\_\_\_  
Slow Worms live in rough grasslands and woodlands.

9. \_\_\_\_\_  
Slow worms are usually not known to be dangerous to humans as they do not bite at all.

10. \_\_\_\_\_  
Slow-worms are covered in scales. They shed their skin in patches like other lizards, rather than the whole skin as most snakes do.

11. \_\_\_\_\_  
Slow-worms do not lay eggs, they are viviparous, which means that they typically produce 6 to 12.eggs, which they incubate in their bodies. They then give birth to live babies.

12. \_\_\_\_\_  
Slow-worms are diurnal, in other words they are predominantly active during the day. However, they like to lie in the sun for hours.

13. \_\_\_\_\_  
Slow worms like to hibernate under earth or compost heaps. Sometimes they hibernate in groups of up to 30 animals.

14. \_\_\_\_\_  
In Europe slow-worms are considered as a sort of heroes because they eat massive amounts of slugs and insects out of the garden.

15. \_\_\_\_\_  
They are not endangered worldwide yet. However, there are not as many slow-worms as there used to be. Many places where they used to live have been built on. In Luxembourg they are legally protected.

- a. **Are slow worms endangered?**
- b. **Are slow-worms dangerous?**
- c. **Are slow-worms herbivores, carnivores or omnivores?**
- d. **Are slow-worms slow or blind**
- e. **How do slow-worms spend the winter?**
- f. **How many eggs do slow-worms lay?**
- g. **To what extent are slow-worms useful animals?**
- h. **What are some predators of slow-worms?**
- i. **What is the lifespan of a slow-worm?**
- j. **What is the main cause of mortality of slow-worms?**
- k. **What size are slow-worms?**
- l. **What type of animal are slow-worms?**
- m. **What type of covering do slow-worms have?**
- n. **When are slow-worms active?**
- o. **Where do slow-worms live?**



## 8. Wolves - 'Carnivorous beasts acquiring a taste for human flesh': when wild wolves still plagued Luxembourg<sup>8</sup>

Author: Gerry Erang | Update: 22.07.2021 10:20

**Fill the gaps (1-20) with the correct form of the past simple of the verbs in brackets.**



Luxembourg's last wolf \_\_\_1\_\_\_ (officially / to kill) by the examining magistrate Edouard Wolff (oh the irony) near Olingen on 24 April 1893. After the recent wolf sightings on Belgium not far from the Luxembourg border, most residents \_\_\_2\_\_\_ (to be) happy to hear that wolves might return to roam the Grand Duchy's forests once more. Fair to say this would not have been the case a couple of centuries ago...

### When wolves acquired 'a taste of human flesh'

In an early book on Luxembourg's religious history, Jesuit Jean Bertholet (1688-1755) offers a rather colourful account of a wolf plague that allegedly \_\_\_3\_\_\_ (to take) place in the Grand Duchy in 1045: "The men who \_\_\_4\_\_\_ (to die) in the countryside and \_\_\_5\_\_\_ (to remain) without burial, were eaten by wolves; these carnivorous beasts acquiring a taste for human flesh. [The wolves] later also \_\_\_6\_\_\_ (to throw) themselves upon the living and \_\_\_7\_\_\_ (to kill) a great number of them." Bertholet also \_\_\_8\_\_\_ (to come) up with an explanation for the attacks: in his view, they \_\_\_9\_\_\_ (to represent) "Heaven's anger."

While it's somewhat difficult to prove or disprove Bertholet's account of this early wolf plague, there are countless other reports of wolf attacks in Luxembourg. Towards the end of the 18th century, France for example officially \_\_\_10\_\_\_ (to call) Luxembourg the 'Département des loups' because of the high number of wolves roaming the country. In 1801, a forester \_\_\_11\_\_\_ (to alert) the mayor of Luxembourg City to a ravenous (= hungry) pack of wolves in the Bambesch forest. The wolves, he anxiously \_\_\_12\_\_\_ (to report), had already devoured pigs owned by the municipality of Strassen. Other foresters were instructed to hunt down the wolves - unfortunately there are no historical sources detailing the outcome of the hunt.

### A battle between wolves and farmers in Dudelange

Another quite spectacular confrontation between humans and wolves \_\_\_13\_\_\_ (to occur) in 1709, which was the year that \_\_\_14\_\_\_ (to bring) the Great Frost to Europe. Temperatures reportedly

<sup>8</sup> Adapted from <https://today.rtl.lu/luxembourg-insider/history/a/1715148.html>

\_\_\_15\_\_\_ (to drop) to under -30°C, plunging the Grand Duchy and its neighbouring countries into famine and misery.

To make matters worse, the extreme cold and lack of food also \_\_\_16\_\_\_ (to play) a key role in triggering a veritable wolf plague in Dudelange. A pack of 30 wolves \_\_\_17\_\_\_ (to come) into the village from Rotenberg a day after they had already torn an 8-year-old boy to pieces. According to various sources, the farmers \_\_\_18\_\_\_ (to get) hold of axes, pitchforks and other makeshift weapons and \_\_\_19\_\_\_ (to have) a gory (= bloody, brutal) battle with the voracious animals. Twenty-two wolves \_\_\_20\_\_\_ (to be) killed and some farmers badly injured.

***Answer the questions in your own words.***

1. When was Luxembourg's last wolf killed?

---

2. How do people feel about the return of the wolf?

---

3. When did Jean Bertholet live?

---

4. When was there a wolf plague in Luxembourg according to Jean Bertholet?

---

5. How did Jean Bertholet explain the wolf plague?

---

6. Describe what happened around 1800 in and around the city of Luxembourg with regards to wolves ?

---

7. What was life like in Luxembourg in 1709?

---

8. How did the wolves in Dudelange cope with the situation?

---

## 9. Wolves<sup>9</sup>

**Fill the gaps (1-20) with the correct form of the present simple of the verbs in brackets.**

### Introduction

Wolves are members of the dog family. They are known for their intelligence and courage. Wolves are also noted for traveling very long distances. North American Indians named their most powerful warriors after wolves.



### Where \_\_\_1\_\_\_ (wolves / to live)?

There are two species, or types, of wolf. The best known is the grey wolf. It \_\_\_2\_\_\_ (to live) in North America, Europe, and Asia. The Ethiopian wolf was once considered a jackal. Many people now \_\_\_3\_\_\_ (to believe) it is a wolf.

The red wolf was once thought to be a separate species. Now scientists \_\_\_4\_\_\_ (to think) it is a cross between a grey wolf and a coyote. The red wolf used to live throughout the south-eastern United States. Now most red wolves \_\_\_5\_\_\_ (to live) in captivity. Some \_\_\_6\_\_\_ (still / can / to be – word order!) found in the wild in North Carolina.

### What \_\_\_7\_\_\_ (wolves / to look) like?

The grey wolf has long legs and large feet. The males are larger than the females. A male grey wolf usually \_\_\_8\_\_\_ (to weigh) about 45 kilograms. Including the tail, it may be about 2 meters long. The grey wolf's fur \_\_\_9\_\_\_ (to be) usually grey. It may also be brown, red, white, or black. The legs and belly \_\_\_10\_\_\_ (to be) yellowish white.

### How \_\_\_11\_\_\_ (wolves / to behave)?

Wolves \_\_\_12\_\_\_ (to be) social animals. They \_\_\_13\_\_\_ (to live) in groups called packs. A wolf pack usually \_\_\_14\_\_\_ (to have) a pair of adult wolves and their offspring. The male and female leaders are known as the alpha pair. Wolves normally \_\_\_15\_\_\_ (to hunt) at night in groups. They \_\_\_16\_\_\_ (to eat) deer, moose, squirrels, and mice.

### \_\_\_17\_\_\_ (wolves / to be) endangered?

All species of wolf \_\_\_18\_\_\_ (to be) in danger of dying out. This is partly because their habitats are being destroyed. People also \_\_\_19\_\_\_ (to kill) wolves because the wolves \_\_\_20\_\_\_ (to attack) cattle. Today there are many programs to protect wolves.

<sup>9</sup> Adapted from <https://kids.britannica.com/kids/article/wolf/353930>

## 10. How will the presence of a wolf affect the lives of farmers in Luxembourg?<sup>10</sup>



Author: Pit Everling - adapted for RTL Today |  
Update: 13.01.2022 10:51

**Fill the gaps (1-20) with the correct form of the past simple or the present simple of the verbs in brackets.**

Our colleagues from RTL \_\_\_1\_\_\_ (to speak) to Laurent Schley, Raymond Baulesch and Christian Wester on 13 January 2022 about the wolf sighting and its consequences for the sector.

The Nature and Forest administration \_\_\_2\_\_\_ (to confirm) that a wolf had been photographed near Wincrange the Tuesday before. How will this presence affect human and animal lives in the region?

In the interview, Laurent Schley, deputy director of the administration, \_\_\_3\_\_\_ (to provide) insights as to how one \_\_\_4\_\_\_ (can / to recognise) a wolf: "The ears \_\_\_5\_\_\_ (not / can / to be) overly pointy, otherwise it's likely to be a dog. Wolf ears \_\_\_6\_\_\_ (to tend) to be a bit shorter and rounder." Similarly, their tails \_\_\_7\_\_\_ (to be) relatively short in comparison to dogs.

There is no doubt that the animal spotted in Wincrange is a wolf since there has recently also been a sighting in Bourcy in Belgium. Authorities \_\_\_8\_\_\_ (to estimate) that the wolf has been in the region for a while, but it is difficult to assess whether it will stay or whether it is only passing through.

According to Schley, mating could have an effect on the animal's moves: "If it is a solitary animal, it is likely to leave once it \_\_\_9\_\_\_ (to fail) to find a mate."

### **Potential conflicts**

Wolves tend to shy away from human contact, which \_\_\_10\_\_\_ (to make) an encounter highly unlikely. In case of meeting a wolf that will not immediately leave, people are advised to raise their voice as well as their arms to make their presence clear.

Wolves usually \_\_\_11\_\_\_ (to feed) on game (= wild animals), but also farm animals such as sheep, which is the major cause of conflict with humans. A respective action and management plan has been in place since 2017, which also \_\_\_12\_\_\_ (to provide) cost coverage in case of lost farm animals.

Nevertheless, it \_\_\_13\_\_\_ (to remain) difficult to protect oneself against wolves, \_\_\_14\_\_\_ (to say) Raymond Baulesch, president of the Sheep Farmers Association, in the interview last Thursday: "We \_\_\_15\_\_\_ (not / can / to close) off our grass fields with two-metre-high barriers. Sheep farmers in the

---

<sup>10</sup> Adapted from <https://today.rtl.lu/news/luxembourg/a/1846447.html>

Oesling region have to start thinking about measures though. We \_\_\_16\_\_\_ (not to want) the wolf to be shot but have to find a solution still. Support from the government should be greater."

When he was interviewed Christian Wester, president of the Luxembourg Farmers Association (Bauernzentral), \_\_\_17\_\_\_ (to explain) that the action and management plan were going in the right direction, but that overall support from the government should be increased: "Farmers are only compensated for the loss of animal if its death can be traced back to a wolf with absolute certainty. Procedures are lengthy and this \_\_\_18\_\_\_ (not to sit) well with many in the sector."

Christian Wester further \_\_\_19\_\_\_ (to lament) that indirect consequences were not being considered. Safety fences are only subsidised if the presence of a wolf has been officially confirmed. It thus \_\_\_20\_\_\_ (to remain) difficult for farmers to take any preventive measures.

The Wolf spotted near Winchrang could be a solitary animal, but wolf packs have already been seen forming in some places abroad, like for instance in the German-Belgian border region near Hohen Venn. Laurent Schley estimates that the first pack in Luxembourg is only a question of time.

**Match the verbs from the text (1-9) with the definitions (a-i)**

- |                     |   |
|---------------------|---|
| 1. to affect        | a. to have an influence on somebody / something, or to cause a change in somebody / something |
| 2. to assess        | b. to judge or decide the amount, value, quality or importance of something                   |
| 3. to fail          | c. not to succeed in what you are trying to achieve or expected to do                         |
| 4. to lose          | d. to be unable to find something / somebody  |
| 5. to provide       | e. to give somebody something that they need  |
| 6. to raise         | f. to lift or move something to a higher position   |
| 7. to shy away from | g. to avoid something that you dislike, fear or do not feel confident about                   |
| 8. to spot          | h. to see or notice a person or thing, especially suddenly when it is not easy to do so       |
| 9. to trace         | i. to find or discover somebody / something by looking carefully for them / it                |

**Write your answers here**


<b>1</b>	<b>2</b>	<b>3</b>	<b>4</b>	<b>5</b>	<b>6</b>	<b>7</b>	<b>8</b>	<b>9</b>

## VII. HEALTH CARE

### 1. Doctena

#### Relevant vocabulary

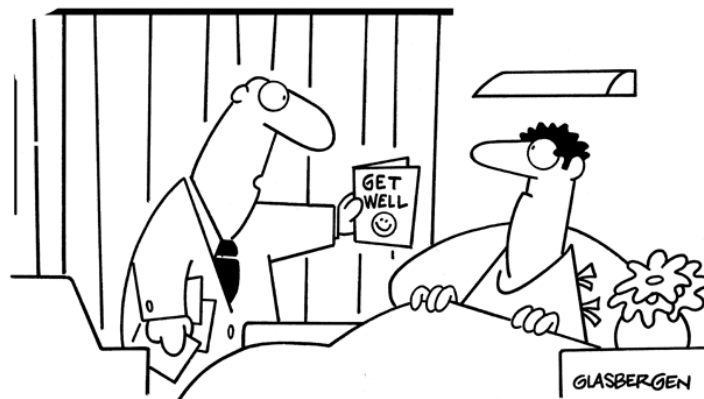
Match the words and expressions below (1-10) with the definitions (a-j). There is an example (0,o).

- |   |   |  |
|---|---|--|
| <p>0. after hours</p> <p>1. antihistamine</p> <p>2. emergency</p> <p>3. on duty</p> <p>4. over the counter (medicine)</p> <p>5. prescription</p> <p>6. prescription-free (medicine)</p> <p>7. referral</p> <p>8. side effect</p> <p>9. urgent</p> |  | <p>a. the act of sending somebody who needs professional help to a person or place that can provide it</p> <p>b. a drug used to treat allergies</p> <p>c. an extra and usually bad effect that a drug, medical treatment or vaccine has in addition to the main intended effect</p> <p>o. happening after the usual hours of work</p> <p>d. a piece of paper on which a doctor writes the details of the medicine or drugs that someone needs and which enables them to get it from a chemist's</p> <p>e. a situation which is dangerous or serious, such as an accident, that happens suddenly and needs fast action to avoid harmful consequences</p> <p>f. which can be bought without a doctor's prescription</p> <p>g. which can be bought without a doctor's prescription</p> <p>h. which needs to be dealt with immediately</p> <p>i. working and being responsible for dealing with the different parts of the job</p> |
|---|---|--|

Write your answers here

0	1	2	3	4	5	6	7	8	9
o									

Copyright 2009 by Randy Glasbergen. www.glasbergen.com



"I'm the doctor who brings the cards. I'm a cardiologist."



## How to find a doctor / Doctena

Listen to a chemist telling a customer about finding a doctor in Luxembourg.

Are the following statements true or false? Tick ✓ the respective box. If there is not enough information, tick the box for 'not given' (?).

	True	False	?
1. Antihistamines help against hay fever.	<input type="checkbox"/>	<input type="checkbox"/>	<input type="checkbox"/>
2. In Luxembourg you can buy antihistamines over the counter.	<input type="checkbox"/>	<input type="checkbox"/>	<input type="checkbox"/>
3. Antihistamines do <b>NOT</b> have side-effects.	<input type="checkbox"/>	<input type="checkbox"/>	<input type="checkbox"/>
4. If you need to go to a hospital for an emergency, you might have to wait for your turn.	<input type="checkbox"/>	<input type="checkbox"/>	<input type="checkbox"/>
5. The 'maisons médicales' are open 24/7.	<input type="checkbox"/>	<input type="checkbox"/>	<input type="checkbox"/>

What does the conversation reveal about 'Doctena'?

Doctena wants users to		True	False	?
1.	register before they can use the website	<input type="checkbox"/>	<input type="checkbox"/>	<input type="checkbox"/>
2.	login to book appointments	<input type="checkbox"/>	<input type="checkbox"/>	<input type="checkbox"/>
3.	pay for their services	<input type="checkbox"/>	<input type="checkbox"/>	<input type="checkbox"/>
Doctena allows users to				
4.	find a doctor and make an appointment with them	<input type="checkbox"/>	<input type="checkbox"/>	<input type="checkbox"/>
5.	find other health professionals, such as physiotherapists	<input type="checkbox"/>	<input type="checkbox"/>	<input type="checkbox"/>
6.	reschedule an appointment	<input type="checkbox"/>	<input type="checkbox"/>	<input type="checkbox"/>
7.	cancel an appointment	<input type="checkbox"/>	<input type="checkbox"/>	<input type="checkbox"/>
8.	find a health professional by location	<input type="checkbox"/>	<input type="checkbox"/>	<input type="checkbox"/>
9.	find a health professional by speciality	<input type="checkbox"/>	<input type="checkbox"/>	<input type="checkbox"/>
10.	find a health professional by language	<input type="checkbox"/>	<input type="checkbox"/>	<input type="checkbox"/>
11.	pay for the treatment	<input type="checkbox"/>	<input type="checkbox"/>	<input type="checkbox"/>
12.	recover the money for the treatment from the CNS	<input type="checkbox"/>	<input type="checkbox"/>	<input type="checkbox"/>
13.	let the health professional know how you felt about the service they have received	<input type="checkbox"/>	<input type="checkbox"/>	<input type="checkbox"/>
14.	let the general public know how you feel about the service they have received	<input type="checkbox"/>	<input type="checkbox"/>	<input type="checkbox"/>
15.	find out about hospitals on duty	<input type="checkbox"/>	<input type="checkbox"/>	<input type="checkbox"/>
16.	Find out about chemists on duty	<input type="checkbox"/>	<input type="checkbox"/>	<input type="checkbox"/>

Go to the Doctena website (<https://www.doctena.lu/en/>) and complete the table.



## The family planning 1

Please find below two pages from a leaflet by the Luxembourg Family Planning service.  
Read the information and answer the questions overleaf.

### The Family Planning: a user's guide

#### Who is it for?

The Family Planning is **for everyone**, no matter how young or old you are!

- > **young people** (except psychological consultations: 14 years old and up)
- > **women and men**
- > **parents, couples, and families**
- > **students**, teachers and other education, social and health **professionals**

#### How much does it cost?

The Family Planning is for everyone, regardless of income!

Help desk services, medical services and consultations are free of charge.

Counselling related to pregnancy whether wanted or not, prior or after abortion and social services are free of charge.

Any financial support to our medical services will be greatly appreciated (usual contribution of 15€ if you can afford).

For psychological consultations or counselling, a financial contribution in line with your income is welcome, but it is entirely up to you.

#### How does it work?

For a medical or psychological **consultation**, for pre/post abortion care, you must **make an appointment**. We take emergencies into account, but it is necessary to inform the centre before you come.



### The Family Planning: you matter to us

First of all, **we hear your story**, your questions, your doubts, sometimes your pain, with attention, kindness and utmost respect.

**Feel free** to talk about anything that worries you; there are **no taboos, no judgement or prejudice**.

In our centres, you will find help, guidance, care, and information.

Our services are provided to the highest standards of care, hygiene, quality, comfort, security, privacy, dignity and are **respectful of all opinions**.

Our multidisciplinary team is bound by **professional confidentiality**. It offers a unique blend of expertise for an individual and comprehensive service.

- > **doctors**
- > **gynaecologists**
- > **psychologists**
- > **sex therapists**
- > **counsellors**
- > **nurse**
- > **social worker**
- > **emotional and sexual educators**
- > **trained help desk staff**



**I. Decide if the following statements are true or false, or if there is not enough information in the text (?). Tick the respective box.**

	True	False	?
1. When going to a Family Planning centre, you will be questioned thoroughly on anything concerning your person (relationships, sexuality, health...) by the staff members.	<input type="checkbox"/>	<input type="checkbox"/>	<input type="checkbox"/>
2. When doing their work, the Family Planning staff members apply the highest professional standards.	<input type="checkbox"/>	<input type="checkbox"/>	<input type="checkbox"/>
3. When going to a Family Planning centre, you will be seen by a team of nine different specialists to begin with.	<input type="checkbox"/>	<input type="checkbox"/>	<input type="checkbox"/>
4. If you are underage, the Family Planning staff members will inform your parents of all your problems.	<input type="checkbox"/>	<input type="checkbox"/>	<input type="checkbox"/>

**II. Complete the following sentences by ticking the best option.**

1. The following group of people is **NOT** at the centre of the Family Planning's mission -
  - a.  men
  - b.  teenagers
  - c.  women aged 50+
  - d.  young children
  
2. Payment for the Family Planning's services is
  - a.  entirely voluntary.
  - b.  limited to 15€ a consultation.
  - c.  in line with the patients' income.
  
3. When your case is an emergency, you are expected to
  - a.  fix an appointment well ahead of time.
  - b.  let the centre know that you are coming.
  - c.  get to the centre right away.



## The family planning 2

Please find below two pages from a leaflet by the Luxembourg Family Planning centres  
Read the information and answer the questions overleaf.

WELCOME!



### Help desk - reception:

The staff at our centres will handle your questions, requests, and problems. If necessary, they will direct you towards one of our services or to an external service provider. At our help desk, you will find

- > **Information** about contraception, sexually transmitted infections (STIs), periods, sexuality, abortion, etc.; and if needed, brochures and information on other more appropriate service providers.
- > **Condoms and lubricants:** the only effective protection against HIV/AIDS and STIs!
- > **Pregnancy test:** in case of a late period or at least two weeks after having unprotected sex!
- > **Emergency contraception** (morning after pill\*): do not wait at all after having unprotected sex! It is not 100% effective; the longer you wait, the lower the chance of avoiding an unwanted pregnancy!
- > **Contraception: possibility of free birth control methods\*\*** at the Family planning if you are not covered by the National Health Insurance or you are undergoing financial difficulties. Note that some contraceptives for women < 25 years old are reimbursed at rate of 80%.
- > **Chlamydia screening** (urine).

\*after medical advice

### Medical Activities

Our doctors and gynaecologists offer comprehensive gynaecological follow-up.

**Contraception and emergency contraception:** information and access to all family planning methods according to your personnel situation and needs.

**STI screening** for women and men (Hepatitis B and C, HIV/AIDS, chlamydia...).

**Gynaecological screening for cancers and pre-cancerous conditions** (cervical and breast cancer).

Counselling and administration of **HPV vaccination:** free vaccine for girls 11 to 13 years of age (Ministry of Health 2016).

**Pregnancy, wanted or not:**

> **Pregnancy counselling and 1st trimester monitoring**

> **Abortion care\*:** voluntary pre- and post-counselling, medical abortion at our premises and facilitation of surgical abortion in a hospital

> **Infertility:** initial consultation and assessment, referral whenever required

Consultations on **sexuality**, regardless of orientation.

Information on changes related to **puberty** and counselling before the first love and sex relationship.

**Menopause** counselling and follow-up.

Support of victims of **violence** and **sexual abuse**.

Support of all victims of **sexual mutilations** (genital, trans\*, intersex, etc.)

\*Legally authorised facility. Collaboration agreement with the CHL (Centre Hospitalier de Luxembourg)

**I. What are the acronyms for the following expressions?  
If you are not sure look for them in the text.**

1. acquired immune deficiency syndrome \_\_\_\_\_
2. Centre Hospitalier de Luxembourg \_\_\_\_\_
3. human immunodeficiency virus \_\_\_\_\_
4. human papillomavirus \_\_\_\_\_
5. sexually transmitted infections (e.g. syphilis,  
gonorrhoea, and chlamydia) \_\_\_\_\_



**II. Which of the following is / are NOT sexual orientations?**

1.  bisexuality
2.  heterosexuality
3.  homosexuality
4.  intersexuality
5.  transsexuality (now referred to as  
transgender)

**III. Match the words on the left (1-7) with the definitions or synonyms on the right (a-g)**

- |                 |  |
|-----------------|--|
| 1. consultation | a. action taken to cure an illness or injury   |
| 2. counselling  | b. illness   |
| 3. disease      | c. medical treatment of injuries or diseases that involves cutting open a person's body and often removing or replacing some parts                   |
| 4. prescription | d. meeting with an expert, especially a doctor, to get advice or treatment   |
| 5. screening    | e. official piece of paper on which a doctor writes the type of medicine a patient should have, which enables the patient to get it from a chemist's |
| 6. surgery      | f. professional advice about a problem (not related to a special field)  |
| 7. treatment    | g. test or examination to discover if a person suffers from a disease  |

**Write your answers here**

1	2	3	4	5	6	7

IV. **Decide if the following statements are true or false, or if there is not enough information in the text (?). Tick the respective box.**

	True	False	?
1. Depending on your problems, you may be referred to institutions / specialists who work outside the Family Planning centres.	<input type="checkbox"/>	<input type="checkbox"/>	<input type="checkbox"/>
2. The Family Planning help desk distributes condoms for free.	<input type="checkbox"/>	<input type="checkbox"/>	<input type="checkbox"/>
3. You need not see a doctor to get the morning after pill.	<input type="checkbox"/>	<input type="checkbox"/>	<input type="checkbox"/>
4. The National Health Insurance normally pays 80% of the price of most contraceptives.	<input type="checkbox"/>	<input type="checkbox"/>	<input type="checkbox"/>
5. Hepatitis B and C are sexually transmitted infection.	<input type="checkbox"/>	<input type="checkbox"/>	<input type="checkbox"/>
6. Women get treatment against breast cancer at the Family Planning centres.	<input type="checkbox"/>	<input type="checkbox"/>	<input type="checkbox"/>
7. The HPV vaccination is free for girls who are younger than 14.	<input type="checkbox"/>	<input type="checkbox"/>	<input type="checkbox"/>
8. Women can end unwanted pregnancies by means of a medical operation at the Family Planning centres.	<input type="checkbox"/>	<input type="checkbox"/>	<input type="checkbox"/>
9. Couples who do not manage to have children, get information on fertility treatments at the Family Planning centres.	<input type="checkbox"/>	<input type="checkbox"/>	<input type="checkbox"/>
10. The Family Planning centres offer artificial insemination to single women.	<input type="checkbox"/>	<input type="checkbox"/>	<input type="checkbox"/>
11. Men or women who get physically and/or sexually abused get help at the Family Planning centres.	<input type="checkbox"/>	<input type="checkbox"/>	<input type="checkbox"/>
12. The Family Planning centres support young girls who risk female circumcision.	<input type="checkbox"/>	<input type="checkbox"/>	<input type="checkbox"/>



"Just for fun, do you want me to Photoshop in a few more before your husband gets here?"

### 1. Free music schools

FROM SEPTEMBER 2022

## Luxembourg makes music education for children free<sup>11</sup>



Written by Teodor Georgiew

Published on 27.04.2022



**Luxembourg will introduce free public music education applying to about two thirds of pupils, with partial or complete reimbursement for the rest, strengthening funding for municipalities that offer music lessons.**

The country's musical education reform was approved in parliament on Tuesday, with 56 votes for and four abstentions. The changes will come into effect from the start of the 2022-2023 school year and will ensure free music lessons but also theatre, dance, choir and diction classes. The initiative will be spearheaded by Luxembourg's communes and will apply to children from the age of three and older.

"Quality music education that is free and accessible to all children and young people contributes to their individual development and supports the development of their skills," said education minister Claude Meisch in a statement.

*Photo Shutterstock*

Courses that are not covered by the free education bill will be fully reimbursed to families with low income and partially reimbursed to those above that threshold.

The annual financial allocation from the state to municipalities will be increased by more than 50% and will no longer be capped but instead it will be adjusted each year according to the number of pupils and the amount of teaching time in music schools. The reform also envisions providing more support for music teachers from 1 January 2023.

Higher music education in Luxembourg expanded its offer in 2021 when the University of Luxembourg added a music education bachelor to its list of programmes, enabling graduates to work in the grand duchy and the greater region.

***The verbs which mean the following have been used in the passive (to be + past participle) in the text. Find the verbs and complete the table with the corresponding infinitives.***

1. to have a positive opinion of, to consider as good, acceptable, or suitable, to agree to a plan, request, etc. officially \_\_\_\_\_
2. to begin or launch an activity \_\_\_\_\_
3. to be enough money to pay for something \_\_\_\_\_
4. to pay money back to somebody which they have spent or lost \_\_\_\_\_
5. to become greater in amount, number, value, etc.; to make something greater in amount, number, value, etc. \_\_\_\_\_
6. to limit the amount of money that can be charged for something or spent on something \_\_\_\_\_
7. to change something slightly to make it more suitable for a new set of conditions or to make it work better \_\_\_\_\_

<sup>11</sup> <https://delano.lu/article/free-music-education-introduce>

**Why do you think the author chose to use the passive?**

---

**Find words and expressions in the text which mean the following**

1. the act of choosing not to use a vote either in favour of or against something, abstention (from something) \_\_\_\_\_
2. to come into use; to begin to apply \_\_\_\_\_
3. which can be reached, used, entered, seen, etc. \_\_\_\_\_
4. declaration, formal or official account of facts or opinions \_\_\_\_\_
5. the level at which something starts to happen or have an effect \_\_\_\_\_
6. an amount of money, space, etc. that is given to somebody for a particular purpose \_\_\_\_\_
7. to imagine what a situation will be like in the future, especially a situation you intend to work towards (formal) \_\_\_\_\_
8. to become greater in size, number or importance; to make something greater in size, number or importance \_\_\_\_\_
9. a university or college qualification that usually takes 3 or 4 years of study, or a person who has this qualification, usually the first university degree \_\_\_\_\_
10. a person who has a university degree \_\_\_\_\_

**Decide if the sentences below are true or false. Tick the respective box. If there is not enough information in the text, tick '?'.**

	<b>True</b>	<b>False</b>	<b>?</b>
1. The music classes are organised by the communes.	<input type="checkbox"/>	<input type="checkbox"/>	<input type="checkbox"/>
2. The communes will receive more money.	<input type="checkbox"/>	<input type="checkbox"/>	<input type="checkbox"/>
3. About 12,000 pupils will benefit from the offer.	<input type="checkbox"/>	<input type="checkbox"/>	<input type="checkbox"/>
4. Several parliamentarians voted against the musical reform.	<input type="checkbox"/>	<input type="checkbox"/>	<input type="checkbox"/>
5. The new law applies immediately.	<input type="checkbox"/>	<input type="checkbox"/>	<input type="checkbox"/>
6. Only music classes will be offered for free.	<input type="checkbox"/>	<input type="checkbox"/>	<input type="checkbox"/>
7. People of all ages can take advantage of the new offer.	<input type="checkbox"/>	<input type="checkbox"/>	<input type="checkbox"/>
8. Pupils who are not so well off will get the money for courses that are not free.	<input type="checkbox"/>	<input type="checkbox"/>	<input type="checkbox"/>
9. The money the communes obtain depends on the number of pupils they have and the number of lessons these pupils attend.	<input type="checkbox"/>	<input type="checkbox"/>	<input type="checkbox"/>
10. The music teachers will get a pay rise.	<input type="checkbox"/>	<input type="checkbox"/>	<input type="checkbox"/>
11. Music teachers in grand duchy and the greater region must get their qualifications from the University of Luxembourg.	<input type="checkbox"/>	<input type="checkbox"/>	<input type="checkbox"/>

**Note**

You can find another article on free music education in Luxembourg on the following website. It contains information that is not comprised in the above article.

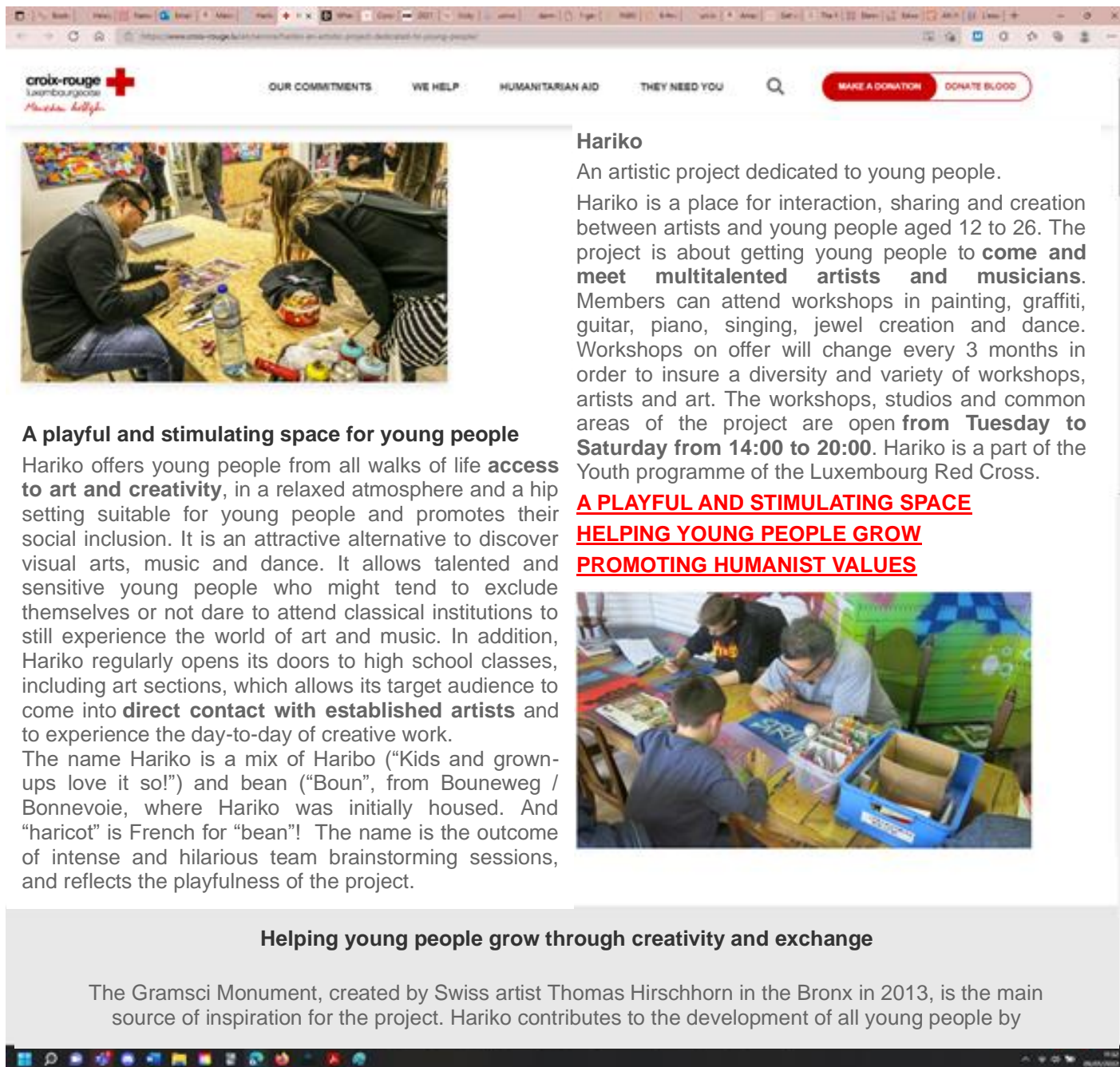
<https://today.rtl.lu/news/luxembourg/a/1904518.html>

## 2. Hariko<sup>12</sup> and arts

Read about Hariko on

<https://www.croix-rouge.lu/en/service/hariko-an-artistic-project-dedicated-to-young-people/>

Decide if the statements below the texts are true or false by ticking the corresponding box. If there is not enough information in the texts, tick ? for 'doesn't say'.



The screenshot shows the website for Hariko, an artistic project by the Luxembourg Red Cross. The page features a navigation menu with 'OUR COMMITMENTS', 'WE HELP', 'HUMANITARIAN AID', and 'THEY NEED YOU'. There are buttons for 'MAKE A DONATION' and 'DONATE BLOOD'. A main image shows a group of people working at a table in a workshop. Below the image, the text describes Hariko as a playful and stimulating space for young people, offering access to art and creativity. It lists activities like painting, graffiti, guitar, piano, singing, jewel creation, and dance. The text also mentions that workshops change every 3 months and are open from Tuesday to Saturday from 14:00 to 20:00. A list of activities is provided: 'A PLAYFUL AND STIMULATING SPACE', 'HELPING YOUNG PEOPLE GROW', and 'PROMOTING HUMANIST VALUES'. A second image shows a group of people working at a table in a workshop.

**Hariko**

An artistic project dedicated to young people.

Hariko is a place for interaction, sharing and creation between artists and young people aged 12 to 26. The project is about getting young people to **come and meet multitalented artists and musicians**. Members can attend workshops in painting, graffiti, guitar, piano, singing, jewel creation and dance. Workshops on offer will change every 3 months in order to insure a diversity and variety of workshops, artists and art. The workshops, studios and common areas of the project are open **from Tuesday to Saturday from 14:00 to 20:00**. Hariko is a part of the Youth programme of the Luxembourg Red Cross.

**A PLAYFUL AND STIMULATING SPACE**

**HELPING YOUNG PEOPLE GROW**

**PROMOTING HUMANIST VALUES**

**Helping young people grow through creativity and exchange**

The Gramsci Monument, created by Swiss artist Thomas Hirschhorn in the Bronx in 2013, is the main source of inspiration for the project. Hariko contributes to the development of all young people by

<sup>12</sup> [Hariko - Luxembourg Red Cross, Menschen h ellefen \(croix-rouge.lu\)](https://www.croix-rouge.lu/en/service/hariko-an-artistic-project-dedicated-to-young-people/)

activating their creative potential, discovering alternative means of expression, exchange and reflection. The project aims to broaden the minds of youths from all walks of life, particularly those who have not yet had access to art. It aims to stimulate their intellectual capacities and their artistic sensitivity in order to provide them with new perspectives in life.

**Promoting humanist values through art**



Hariko naturally promotes the **values of equality and justice**. The truth and authenticity of the artists and of participants' creations generate experiences and encounters that will remain engraved in their intellectual and emotional memory. Hariko aims at strengthening **the ability of youths to integrate**, and at **promoting tolerance** by bringing together diverse groups of youths and artists with different origins and backgrounds to meet and exchange as equals.

**Contact us**

5, rue de l'Église  
L-4106 Esch/Alzette  
27567292  
[hello@hariko.lu](mailto:hello@hariko.lu)

Fields marked with an asterisk (\*) are required to process your inquiry. The other fields may enable us to provide you with a more accurate response to your enquiry.

Your e-mail\*

Message\*

	True	False	?
1. Hariko aims at supporting artists.	<input type="checkbox"/>	<input type="checkbox"/>	<input type="checkbox"/>
2. Hariko organises different classes for various age groups.	<input type="checkbox"/>	<input type="checkbox"/>	<input type="checkbox"/>
3. Hariko is revises and renews its offer every three months.	<input type="checkbox"/>	<input type="checkbox"/>	<input type="checkbox"/>
4. Members can do these courses for free.	<input type="checkbox"/>	<input type="checkbox"/>	<input type="checkbox"/>
5. There are no Hariko courses on Mondays.	<input type="checkbox"/>	<input type="checkbox"/>	<input type="checkbox"/>
6. Hariko is a project run by the Red Cross.	<input type="checkbox"/>	<input type="checkbox"/>	<input type="checkbox"/>
7. Hariko is meant to be an alternative to traditional art, dance and music schools.	<input type="checkbox"/>	<input type="checkbox"/>	<input type="checkbox"/>
8. The name 'Hariko' is an allusion to a popular sweet as well as to the name of a part of the city of Luxembourg.	<input type="checkbox"/>	<input type="checkbox"/>	<input type="checkbox"/>
9. The Hariko project was launched in the Bronx.	<input type="checkbox"/>	<input type="checkbox"/>	<input type="checkbox"/>
10. Hariko is above all about discovering and promoting talented young artists.	<input type="checkbox"/>	<input type="checkbox"/>	<input type="checkbox"/>
11. Hariko would like to develop the social skills and ethical values of young people.	<input type="checkbox"/>	<input type="checkbox"/>	<input type="checkbox"/>
12. The main branch of Hariko is located in Esch.	<input type="checkbox"/>	<input type="checkbox"/>	<input type="checkbox"/>

Are you 12-26 years old? 5 € to become a member and have access to all workshops!

**Hariko**  
ESCH-SUR-ALZETTE

Join our workshops from Tuesday to Saturday from 13:00 to 19:00

Day	Time	Activity
TUESDAY	14:00 - 18:00	Guitar (on demand)
	15:30 - 17:00	Yoga Maya
	17:00 - 18:30	Hip Hop dance
WEDNESDAY	13:30-15:00	Textile Art
	15:00 - 16:30	Marble Mania
	16:00 - 18:00	Creative Photography
THURSDAY	15:00 - 17:00	Graffiti
	17:00 - 18:00	Yoga YAM
	17:00 - 19:00	Collaborative Painting
FRIDAY	14:00 - 16:00	Upcycling
	15:00 - 16:30	Leather Matter
	16:00 - 18:00	African Dance
SATURDAY	14:00 - 16:00	Academic Painting
	16:00 - 17:30	Flamenco
	16:00 - 17:00	3D Figures

Or come to our FREE CREATIVE SPACE and use all the art materials and music instruments for your own projects

Find Hariko at Bâtiment 4  
66, Route de Luxembourg,  
Schlassgoart, Esch-sur-Alzette

hellohariko hariko hello@hariko.lu

LE GOUVERNEMENT DU GRAND-DUCHÉ DE LUXEMBOURG  
LE MINISTRE DE LA CULTURE  
LE MINISTRE DE LA JEUNESSE  
Association ArtLife

BÂTIMENT 4 ESCH

**Complete the sentences by ticking the correct modal auxiliary.**

1. Young people who want to join the workshop by Hariko \_\_\_\_\_ be younger than twelve.  
 a. can                                       b. have to                                       c. must not
2. In Esch they \_\_\_\_\_ do classes on Mondays.  
 a. can                                       b. cannot                                       c. must not
3. They \_\_\_\_\_ become members of Hariko to be given access to the workshop.  
 a. can                                       b. have to                                       c. need not
4. They \_\_\_\_\_ pay 5€ for the membership  
 a. can                                       b. must                                       c. need not
5. They \_\_\_\_\_ pay anything extra for the workshops.  
 a. can                                       b. must not                                       c. need not
6. In the Creative Space they \_\_\_\_\_ realise their own projects.  
 a. can                                       b. must not                                       c. need not

**Read about young people who are looking for a meaningful activity in their free time. Find a workshop which corresponds to their likes and talents, and, which fits into their timetable. In some cases more than one workshop is possible.**

- |  | Workshop(s) |
|--|-------------|
| 1. Aisha has been given all kinds of things by an elderly lady she knows. There are materials she loves but would like to use for a new purpose and there are useful things that she does not like the look of.          | _____       |
| 2. Adama is an excellent singer. He would like to accompany himself on an instrument.  | _____       |
| 3. Aryana has three younger siblings. She has to be at home by 6 pm at the latest when her mother leaves to do her cleaning job. Aryana would like to do some sport.   | _____       |
| 4. Binta loves visual arts and would like to record what she experiences on a daily basis. Unfortunately, her hand eye coordination is not very good, and she does not want to spend a lot of time on learning to paint. | _____       |
| 5. Chang works for Burger King at weekends. He would like to learn to dance.   | _____       |
| 6. Jamal would like to produce works of art like Banksy, i.e. outside.   | _____       |
| 7. Noura loves fancy handbags and belts. She would like to be able to make them herself.   | _____       |
| 8. Samuel works after school on weekdays. He feels stressed and would like to do yoga.   | _____       |

# 1. Science – where to explore it<sup>13</sup>

By Sarita Rao 6 min. 19.04.2021

**If your children are budding scientists, this list of places in the Grand Duchy should keep them busy with their scientific explorations**

In recent years, Luxembourg has made a commitment to grow the sciences – from ground-breaking medical research and investment in space technology, to places where families can learn about the power of physics, chemistry and biology in a hands-on way. If your children are budding scientists, this list of places should keep them busy with their scientific explorations.



*Inside the Luxembourg Science Centre  
Photo Credit: Luxembourg Science Centre*

### **Natural History Museum (Grund)**

Ten permanent exhibition rooms bring to life natural history. Find out how our planet formed, marvel at animal and insect specimens, or take part in talks or workshops. Information on the events can be found here. Opening times have been modified due to Covid-19, and you can find details of this here. Entry is €5 for adults, free for under-21s with some additional costs for workshops or children's clubs.

Every two years, the Natural History Museum and the National Research Fund join forces with several companies, schools and science establishments to host a **Science Festival** in Grund. The next one is planned for November 2021, and the video below gives you a taster of the wonders your family can explore.

### **Luxembourg Science Center (Differdange)**

An interactive science playground features 70 different hands-on science stations, laboratories dedicated to thematic science shows and animators on hand to demonstrate scientific experiments. The science centre costs €12 for adults and €7 for children (free for those under 6 years). Shows are included in the entry price except the Kitchen Show (€3). Entry times are listed online.

### **Tudor Museum (Rosport)**

Immerse yourself in all things electrical in the world of Henri Tudor and see how its magic affected the quality of life from the 19th century to the present day. A pioneer in electricity, Tudor's work has advanced agriculture, transport and even street lighting. The museum is open Wednesday to Sunday 14.00 to 18.00 (April to June, September and October), then until 17.00 from November to March, and Monday to Sunday 10.00 until 18.00 in July and August. Admission is free. Activities include making a solar flower or robot, and it also has a mobile activity offering ideal for birthday parties.

### **Luxlait Vitarium (Roost/Bissen)**

A "mooseum" with a difference, the Vitarium invites you to run as fast as a cow in an interactive indoor playground with activities around healthy eating and living. You can also take a tour of the dairy or participate in a children's workshop. You can find out about opening times and reserve your ticket online. Entry is only with reserved tickets.

### **Park Sënnersräich (Lullange)**

See, hear, touch, smell and taste – use your five senses at the different indoor and outdoor stations of this park. With a large garden, playground and labyrinth, a hands-on, interactive, indoor, five-senses area and a giant AirTramp air cushion for bouncing. Entry costs €9 for anyone aged 12 years or more, €7 for children aged 4-12 years and is free for under 4s. Opening times are listed on our website and you can find a list of measures for Covid-19 online.

---

<sup>13</sup> [Science – where to explore it \(luxtimes.lu\)](https://www.luxtimes.lu)

## Blast furnaces – Belval



start again for Blast Furnace A on 24 April, The full tour of two hours costs €10 with times and languages are [here](#). You can find architecture of Belval [here](#).

Integrating industrial heritage with contemporary architecture the Belval Blast Furnace covers 15 hectares and is home to the City of Science. Climb the 180 steps of furnace A to the former charging platform for breathtaking views. Information panels tell the story of how the blast furnace worked in pig iron production. A new exhibition room is located on the ground floor of the Maison de l'Innovation, 5 avenue des Hauts-Fourneaux.

The exhibition includes a large-scale model and a film on the region's history. Tours with entry costing €5. details. Tour dates, out more about the

*The Blast Furnaces of Belval  
Photo: Shutterstock*

## Planet Trail – Schiffflange

Visit the Red Rock region of the South and embark on a planetary journey via a 4km trail themed around the solar system and classical mythology. The educational trail has several stations starting with the sun and running through all the planets based on distance to the sun. Each station has interesting facts about the planets in French and German. The trail starts near the cemetery / stadium in Schiffflange.

## Science resources for kids

### LuxKids Labs

Run by a very enthusiastic and energetic team, LuxKids Labs aims to bring science to children in a fun and hands-on way and encourage children's enthusiasm for science. They organise science-themed events and parties, and their Facebook page is a great place for science resources.

### Scienteens Lab

Scienteens Lab sets out to give future scientists a taste of life in the laboratory. Supported by the Faculty of Science, Technology and Communication at the University of Luxembourg, it provides teens with hands-on encounters led by experienced scientists from a variety of disciplines. One-day workshops are offered to schools, but individual teens can take part in holiday camps.

## Across the borders...

Border restrictions are changing on a regular basis, particularly [for] non-essential travel. Please check the latest information on entry rules and requirements for each country.

## Euro Space Center (Transinne)

Newly refurbished and launching its space flight unit, you can moonwalk or defy gravity at this space centre. This is the place for anyone fascinated by space science and astronautics, with simulators for space flight and micro-gravity. Spend the day as an astronaut and try out the space flight unit, the free fall slide, planetarium and 5D cinema, and visit the Mars village. You can book tickets in advance and check opening times and dates online.

## Völkinghen Ironworks (Saarland)

The old ironworks of Völkingen have been transformed into a Science Centre which focuses on the elements – fire, water, earth, air and of course iron and steel. Extraordinary historical exhibits, multi-media installations and experiments entice the scientifically curious in a 6000 m<sup>2</sup> space.

## Houtopia (Houffalize)

Younger children will enjoy the 70 sensory experiences designed to show how we live in the world around us. Children are encouraged to use their five senses in an indoor and outdoor play area with lots to touch, feel, see and hear. You can reserve places from 3 April.

*Find the online version of the article. Find out from the websites mentioned in the text the information you need to complete the following table*

		What is the focus of the place?	Where is it located?	When is it open?	How much is the entrance fee?	Who is the target public?	Is the place open to the wider public?
1.	BLAST FURNACES						
2.	LUXEMBOURG SCIENCE CENTER						
3.	LUXLAIT VITARIUM						
4.	NATURAL HISTORY MUSEUM						
5.	PARK SËNNESRÄICH						
6.	PLANET TRAIL						
7.	TUDOR MUSEUM						
8.	LUXKIDS LAB						
9.	SCIENTEENS LAB						
10.	EURO SPACE CENTRE						
11.	VÖLKLINGEN IRONWORKS						
12.	HOUTOPIA						

**Read the text again, then answer the following questions as briefly as possible.**

1. Is there a place that does not have a website or a page on Facebook, Instagram etc.?

---

2. Is there a place you have been to?

---

3. Did you like it? Why / why not?

---

4. Is there a place you would like to go to? Why?

---

5. Which is the cheapest place?

---

6. Which is the most expensive place?

---

7. Is there a place that offers special discounts? Who for? Amount?

---

8. Is there a place that is closed at certain times of the year?

---

9. Where should someone interested in physics go?

---

10. Where should someone interested in astrology go?

---

11. Which place has allows visitors to experience science hands-on?

---

12. Where can visitors experience science outside?

---

13. Is there a place that does not have a website?

---

14. Which place has changing exhibitions on top of the permanent exhibition?

---

## Digital Inclusion



HOME ABOUT US GET SUPPORT...CONTRIBUTE...CLASSES CONTACT

## WELCOME

Welcome to the website of *Digital Inclusion a.s.b.l.* - We are a non-profit organization seeking to help everybody in Luxembourg get access to information technology and computing!

We are supported since 2022 by:




LE GOUVERNEMENT  
DU GRAND-DUCHÉ DE LUXEMBOURG  
Ministère de la Famille, de l'Intégration  
et à la Grande Région

For more information about previous funding partners and sponsors, see the [About us](#) section!

## Office Address & Opening Hours


You can find us at 16 rue d'Epernay, L-1490, near the Luxembourg-Gare

- We are open every day from 9:30 to 18:00. Checking on computer waiting list applications is only done on Fridays.
- **IT Support in our computer-equipped classroom, without appointment: Every Friday 9:30-13:30 ("open class")**
- **Device Repairs are only available by appointment**, please send an email to [repair@digital-inclusion.lu](mailto:repair@digital-inclusion.lu)
-  [Натисніть тут, щоб отримати інформацію, щоб отримати безкоштовний комп'ютер](#) – Ми відкриті щодня. У п'ятницю 9:30-13:30 ми намагаємось надавати підтримку українською мовою, без гарантії.
- For our **classes**, check [here](#)
- If you would like to **donate** a laptop or smartphone, check [here](#)
- We are closed on bank holidays and between December 24 and January 2nd

## News

For recent news on Digital Inclusion, please see our [Media&Articles Page](#) and our [Facebook Page](#) 

## Quick links

-  [Our Facebook Page](#)
- Background information on the association is in the [about us](#) section.
- How to [get a free computer](#)
- [How to donate a laptop?](#)

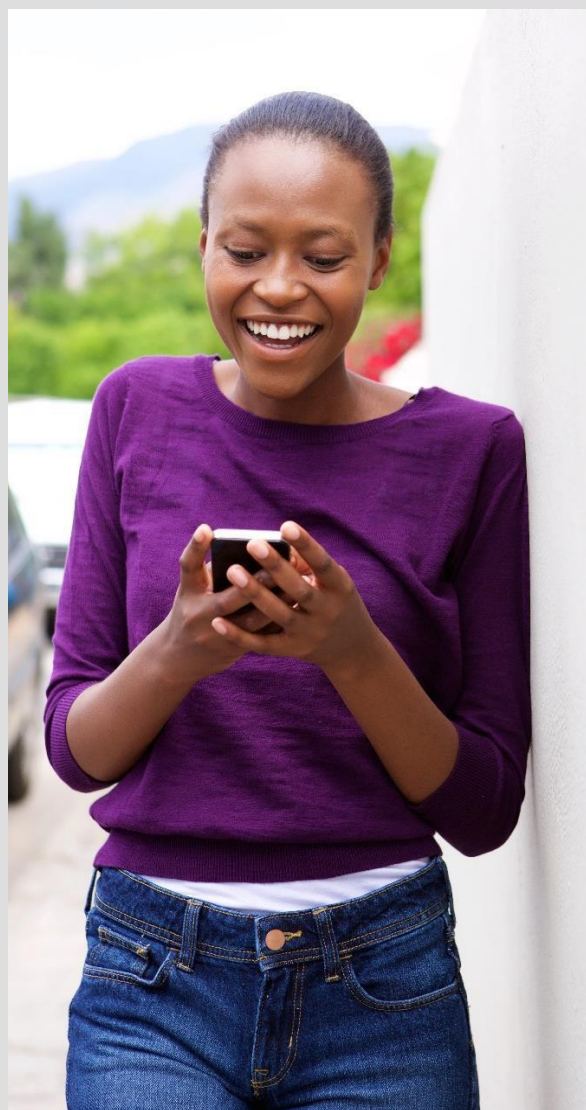
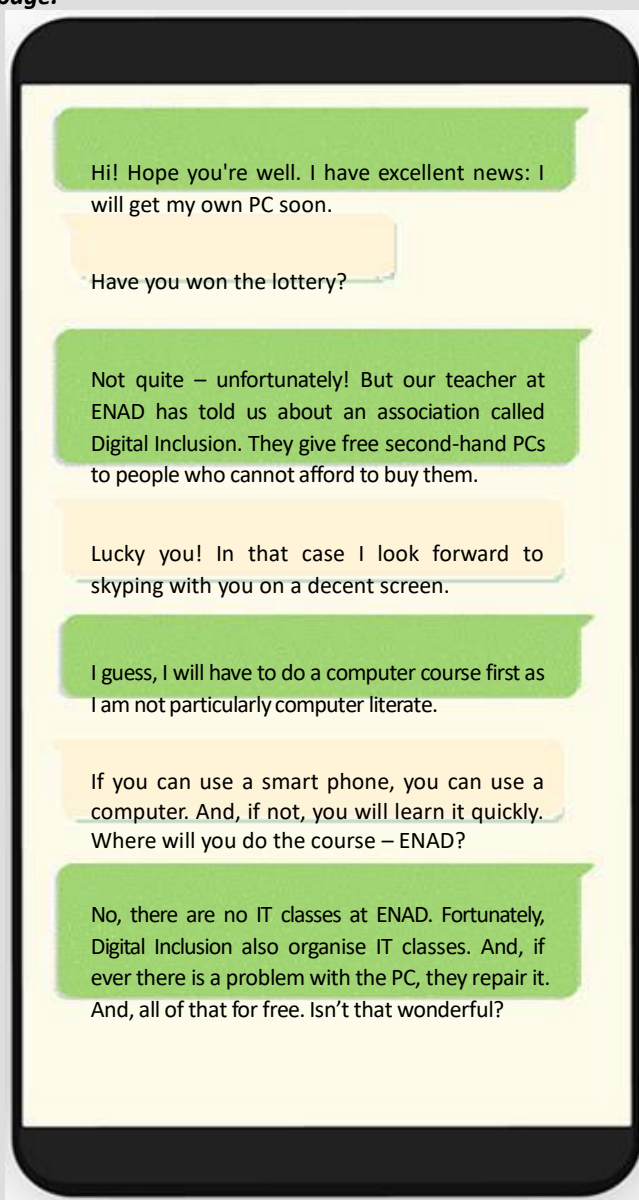
- [How to donate a smartphone?](#)

Read the webpage by *Digital Inclusion*. Decide if the sentences below are true or false. Tick the respective box. If there is not enough information in the text, tick '?'

	True	False	?
1. <i>Digital Inclusion</i> is a commercial enterprise.	<input type="checkbox"/>	<input type="checkbox"/>	<input type="checkbox"/>
2. <i>Digital Inclusion</i> cooperate with the Ministry of Family.	<input type="checkbox"/>	<input type="checkbox"/>	<input type="checkbox"/>
3. You can get in touch with <i>Digital Inclusion</i> at weekends.	<input type="checkbox"/>	<input type="checkbox"/>	<input type="checkbox"/>
4. <i>Digital Inclusion</i> offer individual help to people on Fridays mornings.	<input type="checkbox"/>	<input type="checkbox"/>	<input type="checkbox"/>
5. <i>Digital Inclusion</i> help people to obtain free computers.	<input type="checkbox"/>	<input type="checkbox"/>	<input type="checkbox"/>
6. <i>Digital Inclusion</i> mend the computers when there is a problem	<input type="checkbox"/>	<input type="checkbox"/>	<input type="checkbox"/>
7. <i>Digital Inclusion</i> organise IT classes in different languages.	<input type="checkbox"/>	<input type="checkbox"/>	<input type="checkbox"/>
8. People can give used laptops and mobiles to <i>Digital Inclusion</i> .	<input type="checkbox"/>	<input type="checkbox"/>	<input type="checkbox"/>

## My own computer

Read the chat N'deye Seck is having with her friend in the Gambia. Then answer the questions on the next page.



**Decide if the sentences below are true or false. Tick the respective box.**

**If there is not enough information in the text, tick '?'**

	True	False	?
1. N'deye Seck is from the Gambia.	<input type="checkbox"/>	<input type="checkbox"/>	<input type="checkbox"/>
2. She will receive a laptop.	<input type="checkbox"/>	<input type="checkbox"/>	<input type="checkbox"/>
3. She has won the lottery.	<input type="checkbox"/>	<input type="checkbox"/>	<input type="checkbox"/>
4. She is a student at ENAD.	<input type="checkbox"/>	<input type="checkbox"/>	<input type="checkbox"/>
5. Digital Inclusion is a computer shop.	<input type="checkbox"/>	<input type="checkbox"/>	<input type="checkbox"/>
6. N'deye Seck and her friend communicate via Skype.	<input type="checkbox"/>	<input type="checkbox"/>	<input type="checkbox"/>
7. N'deye Seck knows a lot about computing.	<input type="checkbox"/>	<input type="checkbox"/>	<input type="checkbox"/>
8. The services offered by Digital Inclusion are expensive	<input type="checkbox"/>	<input type="checkbox"/>	<input type="checkbox"/>

**To find out more about 'Digital Inclusion', go to their website. <https://digital-inclusion.lu/>.**

**The information on the website will help you to answer the following questions.**

1. Which part of the website do you go to to find out more about the association *Digital Inclusion*?

---

2. Who is Patrick de la Hamette?

---

3. When was *Digital Inclusion* founded?

---

4. Is it possible to get a job with *Digital Inclusion*?

---

5. Who can get support from *Digital Inclusion*?

---

6. Which languages are the IT classes organised in?

---

7. How long does it take to walk from the station to the premises of *Digital Inclusion*?

---

8. How are you normally supposed to register for IT classes?

---

9. What is the 'Language Lab'?

---

## 2. myeduguichet.lu

### Discover myeduguichet.lu

Accessible from the eduguichet.lu website, myeduguichet.lu is the catalog of online services of the Ministry of National Education, Childhood and Youth, gathered in one place, to make its administration simpler, more efficient and closer to parents and learners.

myeduguichet.lu is aimed at two distinct user targets clearly differentiated by two sections: parents of pupils or persons with parental authority over one or more children ("Parents" section) and learners ("Learners" section) attending a public educational institution in the Grand Duchy of Luxembourg.

### Secondary education

#### Education



#### **Digital services related to education**

The "Education" section includes many services such as the creation of a school certificate, the generation of copies of report cards, the progress of the student, the downloading of certificates of achievement in vocational training, the consultation of the results of the BAC and much more.

#### myBooks



#### **myBooks - Schoolbooks for free**

The "myBooks" service allows parents to access the list of free textbooks for their children. Students can continue to use the [app.mybooks.lu](http://app.mybooks.lu) application, which is accessible on PCs, smartphones and digital tablets.

#### Restopolis



#### **Restopolis - All about the School canteen**

The Restopolis service allows you to consult the menus of the school canteens, to load your account or that of your children, to make reservations of dishes and to consult the history of the consumptions.

#### Digital Classbook



#### **Digital Classbook - Timetable, homework aso. (= etc.)**

Parents can access their child's digital classbook via myeduguichet. This completely replaces the paper classbook. All the traditional functions of a classbook are available and much more.

To access myeduguichet.lu you must accept (1) the [general terms and conditions of use \(GTCU\)](#), (2) the [general terms and conditions specific to the myeduguichet.lu service](#) and (3) the [the terms and conditions of personal data protection](#).



#### **Student access**

In order to access myeduguichet.lu you must authenticate yourself with your IAM account. Please visit the [IAM Website](#) for more information about the IAM account.

1. \_\_\_\_\_

myeduguichet.lu allows its users to access numerous online services related to their own educational path or that of their children. This catalogue of digital services allows the Ministry of National Education, Childhood and Youth to simplify administration by giving users secure access to numerous digital resources concerning them or their children.

2. \_\_\_\_\_

myeduguichet.lu is an application portal that is in constant evolution.

Please refer to the page "SERVICES" on this site.

3. \_\_\_\_\_

Each child has an associated personal space that contains a number of services based on the school they attend.

To access your children's spaces, click the "Connect" button at the top of the page.

Once connected, myeduguichet.lu will automatically assign you the children for whom you have parental authority.

The catalogue of online services offered is constantly evolving.

4. \_\_\_\_\_

The following persons can log in to myeduguichet.lu:

Parents or representatives with parental authority of one or more children who attend the Luxembourg public school system;

Learners, i.e. students in primary and secondary education.

5. \_\_\_\_\_

Learners can log in: with their IAM account; or with a LuxTrust product.

Parents or representatives with parental authority can only log in with a LuxTrust product.

To log in to myeduguichet.lu with a LuxTrust product, you must:

have a 13-digit Luxembourg national identification number (matricule); and

have activated your LuxTrust product; and download and install the LuxTrust middleware on your computer, if you have a LuxTrust product with a chip (SmartCard or Signing Stick).

**Read the text and find a title (a-e) for the different parts of it (1-5).**

- a. How do I access my children?
- b. How to connect to myeduguichet.lu?
- c. What are the services offered by myeduguichet.lu?
- d. Who can connect to myeduguichet.lu?
- e. Why should I connect to myeduguichet.lu?

**Write your answers here**

1	2	3	4	5

### 3. uni.lu - Luxembourg's digital ambitions<sup>14</sup>



Key area

## Digital Transformation

Digitalisation, ICT, data science and artificial intelligence (AI) are playing an ever-greater role in everyday life and are transforming how universities fulfil their missions of research, education, and societal, economic and cultural impact. The University of Luxembourg will contribute to Luxembourg's ambition to become one of the most advanced digital societies and to position itself as a data-driven and sustainable economy.

The University's research will not only help shape the digital world; it will also address questions of data security and privacy, the digital divide in society, ethics and data security, and societal and technical trust. Developing trustworthy ICT systems that strengthen software engineering, reliability and resilience and enhance cybersecurity will be key in bolstering the University's research excellence.

1. What does ICT stand for?
2. Do you know any areas in which AI is used?
3. What does Luxembourg aim at achieving in terms of the digital age?
4. What is a 'sustainable' economy?
5. What is the digital divide mentioned in the text?
6. Universities are not mere schools. What other focus does their work have?

<sup>14</sup> <https://www.uni.lu/research-en/research/digital-transformation/>

## Initiatives<sup>15</sup>

- Digital tools also act as a catalyst for research in interdisciplinary digital humanities. Among different activities, the University will launch an initiative on “big data of the past”, which will allow to travel through Luxembourg’s/Europe’s past history using digital resources.
- The University also wishes to reinforce Luxembourg’s standing as an international frontrunner in Space technology, telecommunication and software engineering.
- The University of Luxembourg aims to be a driver in an informed democratic and ethic debate in Luxembourg about a digitalisation that is robust and trustworthy. A newly created Centre for Ethics of Digitalisation will be a particular means to address this topic. It does not only tackle the ethical, social, governmental, and legal challenges posed by digital innovation and the rise of AI, but it also anticipates future developments that require strategic planning, decision-making, critical thinking and monitoring of all ethically relevant aspects.
- The University will reinforce its activities and expertise further in High Performance Computing (HPC) and data science and enter the quantum era. It has the aim to stimulate their wider use across all its disciplines in both Science, Technology, Engineering, and Mathematics and Social Sciences and Humanities.
- The University will set up a central facility for HPC and for data storage, management and analysis. The facility has the aim to foster frontier-research, higher-education and partnerships in the fields of Computational and Data Sciences, including HPC, Data Analytics, Big Data Applications, Artificial Intelligence and Machine Learning. A recently acquired cutting-edge CPU-based cluster will be the heart of the University’s central facility.
- Within its positioning as a Research University, the University intertwines innovative research and cutting-edge infrastructures with its mission of Higher Education. Besides its programmes in Computer Science, the University has recently started a Master in Data Science, which will take speed in the Four-Year Plan. Additionally, the University intends to create a new specialisation track and eventually a full-fledged master in HPC/HPDA/AI.

**Match the verbs from the text (1-10) with the definitions below (a-j).**

- |                  |   |
|------------------|---|
| 1. to anticipate | a. to begin something such as a plan or introduce something new such as a product             |
| 2. to foster     | b. to encourage the development or growth of ideas or feelings                                |
| 3. to intend     | c. to encourage something develop, to grow or become active                                   |
| 4. to intertwine | d. to formally establish something  |
| 5. to launch     | e. to have as a plan, result or purpose   |
| 6. to monitor    | f. to imagine or expect that something will happen  |
| 7. to set up     | g. to make a determined effort to deal with a difficult situation or problem                  |
| 8. to stimulate  | h. to record the progress or development of something over a period                           |
| 9. to tackle     | i. to twist or be twisted together, so as to be difficult to separate                         |
| 10. to track     | j. to watch and check something over a period of time in order to discover something about it |

**Write your answers here**

1	2	3	4	5	6	7	8	9	10

<sup>15</sup> <https://www.uni.lu/research-en/research/digital-transformation/>

**Match the words from the text (1-10) with the definitions below (a-j).**

- |   |  |
|---|--|
| 1. catalyst                             | a. border between what is known and what is not known  |
| 2. cluster                              | b. completely developed or trained   |
| 3. CPU<br>⇒ CPU-based                   | c. computing that does certain types of complicated calculations much faster than traditional computing, using qubits instead of bits  |
| 4. cutting-edge                         | d. an event or person that causes great change   |
| 5. era                                  | e. technology that uses clusters of powerful processors, working in parallel, to process massive multi-dimensional datasets (big data) and solve complex problems at extremely high speeds |
| 6. quantum (computing)<br>⇒ quantum era | f. a group of similar things that are close together   |
| 7. ethics                               | g. moral principles that control or influence behaviour  |
| 8. frontier<br>⇒ frontier-research      | h. the part of the computer that controls all the other parts, the central processing unit   |
| 9. full-fledged                         | i. a period of time of which particular events or stages of development are typical  |
| 10. HPC                                 | j. reputation, rank, or position in an area of activity, system, or organization   |
| 11. (the) humanities                    | k. the study of subjects such as literature, language, history and philosophy  |
| 12. standing                            | l. very modern and with all the newest features  |
| 13. trustworthy                         | m. which you can have confidence in  |

**Write your answers here**

1	2	3	4	5	6	7	8	9	10	11	12	13

**Read 'Initiatives' and decide if the following statements are true or false.**

**Tick the respective boxes. If there is not enough information in the text, tick?**

- |  | True                     | False                    | ?                        |
|--|--------------------------|--------------------------|--------------------------|
| 1. The computing and the history departments of the university will realise a major project together.                                  | <input type="checkbox"/> | <input type="checkbox"/> | <input type="checkbox"/> |
| 2. Luxembourg is a world leader when it comes to software engineering.   | <input type="checkbox"/> | <input type="checkbox"/> | <input type="checkbox"/> |
| 3. The decision makers at the university of Luxembourg feels that research should not be limited and hindered by moral considerations. | <input type="checkbox"/> | <input type="checkbox"/> | <input type="checkbox"/> |
| 4. They would like HPC to be used in all of the departments of the university.   | <input type="checkbox"/> | <input type="checkbox"/> | <input type="checkbox"/> |
| 5. They need to get new, more modern equipment.  | <input type="checkbox"/> | <input type="checkbox"/> | <input type="checkbox"/> |
| 6. The university is currently offering different master degrees in computing.   | <input type="checkbox"/> | <input type="checkbox"/> | <input type="checkbox"/> |

## 1. Luxembourg - a constitutional monarchy

### THE GRAND DUKE, HEAD OF STATE AND SYMBOL OF THE NATION<sup>16</sup>

Currently, Luxembourg is the only Grand Duchy in the world and the Grand Duke is its head of state. He embodies the independence and continuity of a state that was strongly influenced by the ups and downs of history.



*Grand Duke Henry*

### REPRESENTATIVE DEMOCRACY AND CONSTITUTIONAL MONARCHY

The state of Luxembourg is a representative democracy in the form of a constitutional monarchy, and the sovereign power resides in the nation. The Grand Duke exercises the sovereign power, in accordance with the Constitution and laws of the country. He has only those powers that the Constitution and laws expressly confer upon him.

Since 7 October 2000, Grand Duke Henri has been the 'Head of State, the symbol of its unity and guarantor of national independence' (Article 33 of the Constitution). As such, he has a unique legal status and a set of prerogatives is attached to his function. Powers are conferred upon him by dynastic succession.

### THE GRAND DUKE'S PREROGATIVES

The Constitution of the Grand Duchy grants the Grand Duke considerable prerogatives. Yet in reality, the manner in which the Grand Duke exercises his sovereignty is more pragmatic than the Constitution would seem to indicate.

The Grand Duke participates in legislative power and exercises executive power. Thus, the constitution states that the Grand Duke enacts the laws. Enactment is the act by which the Grand Duke attests to the content of the law and orders its publication and execution.

On an international level, the Grand Duke ratifies treaties and ensures that the interests of the state and the Luxembourgish citizens are protected.

The Grand Duke's regulatory power consists in taking the regulations and decrees necessary for the execution of the laws. He may delegate this power to the members of his government.

In theory, the Grand Duke decides upon the organisation of his government, choosing his ministers. However, in practice, the Grand Duke chooses, on basis of the election results a Prime Minister who presents members of the government to the Grand Duke. They are generally leading figures in the political groups represented in Parliament.

Justice is dispensed in the name of the Grand Duke by the courts and tribunals. The judgements are executed in his name (article 49). But he does not, however, have any means of interfering in the exercise of judicial power.

### THE ORDER OF SUCCESSION TO THE THRONE

The crown of the Grand Duchy is hereditary in the Nassau family in accordance with the family pact of 30 June 1783.

Before 2011, the family pact stipulated that the crown is handed down in a direct line by order of male primogeniture, to the exclusion of female descendants. In June 2011, gender equality in the line of succession was introduced by modification of the family pact.

<sup>16</sup> <https://luxembourg.public.lu/en/society-and-culture/political-system/grand-duke.html>

**Read the text. Then answer the following questions.**

1. What form of government does Luxembourg have?

---

2. Explain.

---

---

3. What is a representative democracy?

---

---

4. Who is the current head of state?

---

5. What conditions does a person have to fulfil to become the head of state of Luxembourg?

---

6. How did the conditions for becoming head of state in Luxembourg change in 2011?

---

7. What does the text tell you about the power that the Luxembourg head of state holds?

---

---

8. Is the head of state also the head of government?

---

9. If no, who is the current head of government?

---

10. How does a person become the head of government in Luxembourg?

---

11. What conditions does a person have to fulfil to become the head of government of Luxembourg?

---

12. Who holds more power the head of state or the head of government?

---

---

---

---

---

---



## 2. Luxembourg and the EU

### What does the EU mean to Luxembourg residents?

25.03.2017 FROM OUR ONLINE ARCHIVE

**As the EU celebrates 60 years on Saturday we asked people in Luxembourg what it means to them.**

(BB/HP) The European Union is celebrating 60 years on Saturday.

On March 25, 1957, the Treaty of Rome was signed - the agreement which established the European Economic Community, giving way to the creation of the European Union.

- 5 The Treaty was signed in Rome by Luxembourg, France, the then West Germany, Italy, Belgium and the Netherlands.

To mark the 60th anniversary of the EU we asked people in Luxembourg what the EU means to them.

Françoise said: "It is such a success, even among young people. We want to keep the union. We must show more solidarity."

- 10 Margaux added: "For me it's about cultural diversity. We are used to Europe. If every country became detached, it would be a step backwards."

Niki commented: "The EU brings people advantages and disadvantages. We have one future in Europe and we must all stick together."

- 15 And Izabela said: "It's easier for foreigners. I feel 100% European. I come from Poland and now I can live here."

1. What is the Treaty of Rome?

---

2. When was the Treaty of Rome signed?

---

3. How many countries signed the Treaty of Rome?

---

4. Which countries signed the Treaty of Rome?

---

5. What do you know about the people who were quoted? Where do they live? What is their nationality?

---

6. How do people feel about the EU?

---

### 3. Voting rights for foreigners

## Communal elections set for next June to avoid voting clash<sup>17</sup>

By [Yannick Hansen](#) 15/06/2022

Communal elections, in which foreign residents can vote, will be held on 11 June next year after lawmakers approved the date in a vote on Wednesday.

5 Deputies voted to bring forward the date of the election, which was originally scheduled for October 2023, as it would have clashed with the country's legislative election, which requires Luxembourgish nationality to be eligible to vote.

10 Luxembourg holds communal elections – also known as local elections – every six years to appoint mayors and councillors, who decide on local budgets and infrastructure projects.

The Christian Democrats (CSV) was the only party to object to the law as it shortens the mandate of councillors and mayors by four months, said CSV deputy Georges Mischo who is also the mayor of Esch-sur-Alzette.

15 “It’s unfortunate we cannot vote this law unanimously. It would have been an important symbolic gesture”, Interior Minister Taina Bofferding whose ministry drafted the law said in parliament.

All residents who have continuously lived in Luxembourg for at least five years are eligible to vote in communal elections, making them the only vote foreigners can take part in in the country.

However, that could soon change as parliament could adopt a bill, that would drop the residency requirement altogether, after it passed a committee in May.

20 The law would allow foreigners to both vote and stand in local elections without needing a set residence requirement, regardless of whether they are EU citizens or not and could come in time for next year's voting round.

25 Non-Luxembourgers account for around half of the country's population and around 70% of residents in the capital, with the latest figures showing that Luxembourg's strong population growth and employment growth is driven by foreigners, including by non-EU migration.

At the last local elections in 2017, less than a quarter of resident foreigners signed up to vote, a study by the Centre for Intercultural and Social Studies showed. A third of foreign residents, some 75,226 people, were not authorised to register on the municipal electoral lists because they did not meet the criteria, parliament's website said.



**For more information about the**

<https://www.youtube.com/watch?v=Rh6TtVPMCKY>

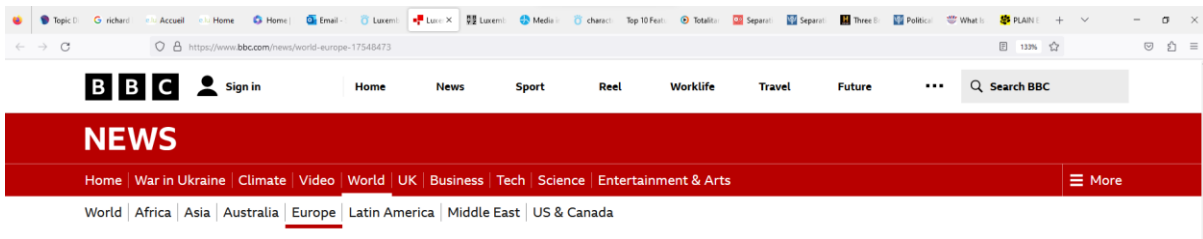
<sup>17</sup> [https://www.luxtimes.lu/luxembourg/communal-elections-set-for-next-june-to-avoid-voting-clash/1339165.html?gad=1&gclid=CjwKCAjwUimBhAsEiwA1hrp5ij564Gu--EGMA\\_RY5WWT4yGhMs3mgm9c1lnPrfOo4qDhwa6sKY-lxoCxBMQAvD\\_BwE](https://www.luxtimes.lu/luxembourg/communal-elections-set-for-next-june-to-avoid-voting-clash/1339165.html?gad=1&gclid=CjwKCAjwUimBhAsEiwA1hrp5ij564Gu--EGMA_RY5WWT4yGhMs3mgm9c1lnPrfOo4qDhwa6sKY-lxoCxBMQAvD_BwE)

**Read the text and answer the questions below.**

1. Which two kinds of elections are mentioned in the text?
  - a. \_\_\_\_\_ elections
  - b. \_\_\_\_\_ elections
  
2. Who is meant by 'expats' or 'foreign residents'?
  - a. EU citizens
  - b. non-EU migrants
  - c. all non-Luxembourgers
  - d. the text is not clear
  
3. Find the verb which means to write the rough version of a law. \_\_\_\_\_
  
4. Look up the different meanings of the word 'bill' (line 18). What is the meaning of 'bill' in the text?  
\_\_\_\_\_
  
5. Find the noun which refers to something that you need to be able to do something else.  
\_\_\_\_\_
  
6. What is the difference between the words 'figure' (line 24) and 'number'?  
\_\_\_\_\_
  
7. What is the singular of the word 'criteria' (line 29)? \_\_\_\_\_
  
8. The text says 'The law would allow foreigners to both vote and stand in local elections' in line 20. What is the verb form 'would' called? What does this verb form express?  
\_\_\_\_\_

**Complete the table below based on what you have learn from the text. If the information is not contained in the text, do an internet research.**

	Local elections	National elections
1.	Are foreign residents allowed to vote in these elections?	
	<input type="checkbox"/> yes <input type="checkbox"/> no	<input type="checkbox"/> yes <input type="checkbox"/> no
2.	Are foreign residents allowed to stand in these elections?	
	<input type="checkbox"/> yes <input type="checkbox"/> no	<input type="checkbox"/> yes <input type="checkbox"/> no
3.	Is there a set resident requirement?	
	<input type="checkbox"/> yes <input type="checkbox"/> no	<input type="checkbox"/> yes <input type="checkbox"/> no
4.	How long is the resident requirement?	
5.	Who is being elected in these elections?	
6.	How often do these elections take place?	



# Luxembourg media guide<sup>18</sup>

25 January 2023



Image source, Getty Images

Luxembourg exerts immense media clout and has a long tradition of operating radio and TV services for pan-European \_\_\_\_\_(1)\_\_\_\_\_

including those in France, Germany and the UK.

Media group RTL is behind much of this activity. Its outlets have been a part of the \_\_\_\_\_(2)\_\_\_\_\_ landscape in France and Germany for decades.

Generations of British listeners grew up with Radio Luxembourg, which beamed pop music \_\_\_\_\_(3)\_\_\_\_\_ into the UK. "The Great 208" is no more, but RTL is still a key \_\_\_\_\_(4)\_\_\_\_\_ in media markets across Europe.

Luxembourg's media empire extends to the skies. It is home to Europe's largest satellite \_\_\_\_\_(5)\_\_\_\_\_, 'Société Européenne des Satellites' (SES), which operates the Astra \_\_\_\_\_(6)\_\_\_\_\_.

RTL and other privately-owned radios and TVs \_\_\_\_\_(7)\_\_\_\_\_ for domestic audiences. The \_\_\_\_\_(8)\_\_\_\_\_ guarantees freedom of speech and of the press. Print media are privately owned and reflect diverse \_\_\_\_\_(9)\_\_\_\_\_.

There were 602,000 internet \_\_\_\_\_(10)\_\_\_\_\_ by December 2021, comprising 96% of the population (Internetworldstats.com).

- [Media guides by BBC Monitoring](#)

## Press

- [Letzebuenger Journal](#)
- [Luxemburger Wort](#)
- [Tageblatt](#)

## Television

- [RTL Tele Letzebuerg](#) - RTL's domestic network
- [Nordlicht TV](#) - station for northern Luxembourg

## Radio

- [RTL Radio Letzebuerg](#) - RTL's domestic network
- [Radio ARA](#) - variety of music, some English-language programmes
- [EldoRadio](#) - pop music
- [Honnert.7 \(100.7\)](#) - public, cultural

## Top Stories

Thousands flee homes and hotels on Rhodes as fires spread

39 minutes ago

Earth in uncharted waters as climate records tumble

11 hours ago

Festival axed as 1975 singer attacks Malaysian LGBT laws

5 hours ago

## Features



When three's not a crowd in a relationship

<sup>18</sup> Adapted from: <https://www.bbc.com/news/world-europe-17548473>

**Read the text and fill the gaps by choosing the best option (a,b,c or d) below.**

1.  a. audiences     b. listeners     c. spectators     d. viewers
2.  a. broadcasting     b. creative     c. mailing     d. sending
3.  a. channels     b. programs     c. programmes     d. shows
4.  a. character     b. member     c. player     d. pawn
5.  a. actor     b. operator     c. producer     d. vendor
6.  a. fleet     b. flock     c. herd     d. swarm
7.  a. accommodate     b. cater     c. play     d. supply
8.  a. rule     b. constitution     c. contract     d. police
9.  a. conclusions     b. evaluations     c. judgements     d. viewpoints
10.  a. addicts     b. freaks     c. nerds     d. users



**For more information about the media in Luxembourg, read**  
<https://luxembourg.public.lu/en/publications/ap-medias.html>

**For more vocabulary on the media as well as exercises, go to**  
<https://helpfulprofessor.com/traditional-media-examples/>  
<https://learnenglishwithafrica.com/courses/media-and-journalism-vocabulary/>  
<https://ted-ielts.com/media-vocabulary/>  
[https://www.myenglishteacher.eu/blog/social-media-vocabulary-list-and-phrases/?expand\\_article=1](https://www.myenglishteacher.eu/blog/social-media-vocabulary-list-and-phrases/?expand_article=1)  
<https://www.studentnewsdaily.com/media-vocabulary/>  
<https://www.thoughtco.com/media-vocabulary-for-english-learners-1212248>

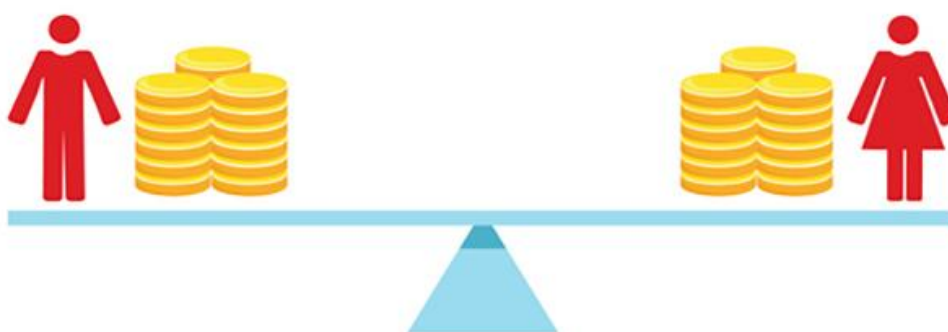
<sup>19</sup> From <https://helpfulprofessor.com/traditional-media-examples/>

### 1. Gender equality - pay gap

#### Women in Luxembourg earned more than men in 2021<sup>20</sup>

For the EU overall, women unlikely to reach pay equity until 2086, Eurostat data show

Emery P. Dalesio Reporter 01/03/2023



Luxembourg beat the gender pay gap for the first time in 2021, but women in some EU countries could be waiting until at least the turn of the century for equal pay, new data from the bloc's statistics agency showed on Wednesday.

5 The average gap between men and women's gross hourly earnings was 12.7% across the EU at the end of 2021, narrowing just 0.2 percentage points from the year before, according to a report by Luxembourg-based Eurostat.

But in Luxembourg, women's pay overtook that of men by 0.2% in 2021, a feat previously only marked in the EU by Slovenia in 2009. Luxembourg has had the lowest gender pay gap in the bloc since 2015. It was 0.7% in 2020, according to Eurostat.

10 The gender pay gap in 2021 dropped to just 5% in Belgium and narrowed further below 10% in Cyprus. Yet the gap in several countries, including Norway, Denmark and Portugal grew, suggesting equality in some places may be getting further out of reach.

Progress toward gender pay parity also slowed across the EU in 2021.

15 At the current pace, men and women won't be paid the same on average across the bloc until around 2086, according to Bloomberg calculations and Eurostat figures. That means a woman born this year could only expect to earn the same as a man around the same time she's old enough to retire.

A dozen countries marked November 15 last year as Equal Pay Day — the date at which women would "work for free" for the rest of the year compared to their male counterparts.

20 The findings come as the EU prepares to vote on new pay transparency rules this month, which include gender equality. If the policy is passed in its current form, publishing pay gaps and the gender split in different pay brackets will become mandatory for employers above a certain size, as is already the case in the UK. The gender pay gap there stood at 14.9% as of April 2022, below the EU average.

<sup>20</sup> [Women in Luxembourg earned more than men in 2021 | Luxembourg Times \(luxtimes.lu\)](https://www.luxtimes.lu/en/women-in-luxembourg-earned-more-than-men-in-2021)

## 2. Gender equality – the reality

### Luxembourg's low gender pay gap hides realities women face<sup>21</sup>

Women's careers ultimately suffer from time devoted to family, despite lowest pay gap in EU, CID lobby group says

Gabrielle Antar Reporter 16/11/2022

Figures showing that Luxembourg has the lowest gender pay gap in the bloc hide the reality of the inequalities women face in the country, a lobby group said on Wednesday.

The pay gap between men and women in Luxembourg was 0.7% in 2020, according to data released by the EU's official statistics agency Eurostat on Tuesday to mark European Equal Pay Day.

5 The difference in the Grand Duchy was the lowest in the bloc and way below the EU average gap of 13%, but the statistics do not tell the whole story about the obstacles women are facing, said Isabelle Schmoetten, from the lobby group CID Fraen an Gender (Women and Gender).

10 "It's great that our pay gap is almost gone, unfortunately that's only half of the truth. [Almost always] only women go to work part-time for family reasons and put their careers back. [...] They therefore earn significantly less when looking at the bigger picture," Schmoetten told the Luxembourg Times.

Due to women often having to choose prioritising family responsibilities over their career, Schmoetten explained that not only do they earn less for that reason, but they also receive "smaller pensions, fewer bonuses and special payments".

15 More than 35% of women in Luxembourg work part-time, a report on gender inequality found in 2019, compared to just 6.1% of men. Over half of the women cited as working part-time did so for family reasons, the study said.

Half of all single mothers interviewed in the 2019 report were judged to be at risk of poverty, those whose salary does not cover their living expenses.

20 "To change [the inequalities women face], we need a fairer distribution of care work, a change of mentality and also some changes in the law. For example, a maternity leave of three months or more transparency in salary policies," said Schmoetten.

A government plan for addressing gender inequality in Luxembourg was inadequate and lacked focus, an official advisory body said in 2020.

15 Women are also under-represented in political life, with just one in four councillors female, Equality Minister Taina Bofferding said in answer to a parliamentary question last year.



<sup>21</sup> [Luxembourg's low gender pay gap hides realities women face | Luxembourg Times \(luxtimes.lu\)](https://www.luxtimes.lu/en/luxembourg-s-low-gender-pay-gap-hides-realities-women-face)

**Describe the images on pages 61 and 62.**

**Do you believe that these images reflect the reality in Luxembourg / your country of origin? Why / why not?**

**Go to <https://www.statista.com/> to find out about the world's leading billionaires in 2023.**

1. Who is the world's richest person? \_\_\_\_\_
2. Who is the world's richest woman? \_\_\_\_\_
3. What position does she have in the ranking? \_\_\_\_\_
4. Compare the fortunes of the richest man and the richest woman in the world? \_\_\_\_\_

1. Does equal pay mean equal income? Explain. \_\_\_\_\_  
\_\_\_\_\_  
\_\_\_\_\_

2. Does equal income mean equal fortune? Explain. \_\_\_\_\_  
\_\_\_\_\_  
\_\_\_\_\_

**Read the texts and answer the questions.**

**Text 1**

3. How does Luxembourg compare to other countries in the EU in terms of gender pay gap?  
\_\_\_\_\_

4. When exactly is 'the turn of the century'?  
\_\_\_\_\_

5. Is there any hope that pay parity will be reached in the EU soon? Explain.  
\_\_\_\_\_  
\_\_\_\_\_

6. What does the 'Equal Pay Day' stand for?  
\_\_\_\_\_  
\_\_\_\_\_

7. What will the pay transparency rules by the EU oblige employers to do?  
\_\_\_\_\_  
\_\_\_\_\_

**Text 2**

1. What was the gender pay gap in Luxembourg in 2020? \_\_\_\_\_

2. What was the average pay gender pay gap in the EU in 2020? \_\_\_\_\_

3. Do women in Luxembourg earn as much as their male colleagues? \_\_\_\_\_

4. Why do women have overall lower incomes even if their hourly earnings are comparable to those of men?  
\_\_\_\_\_  
\_\_\_\_\_

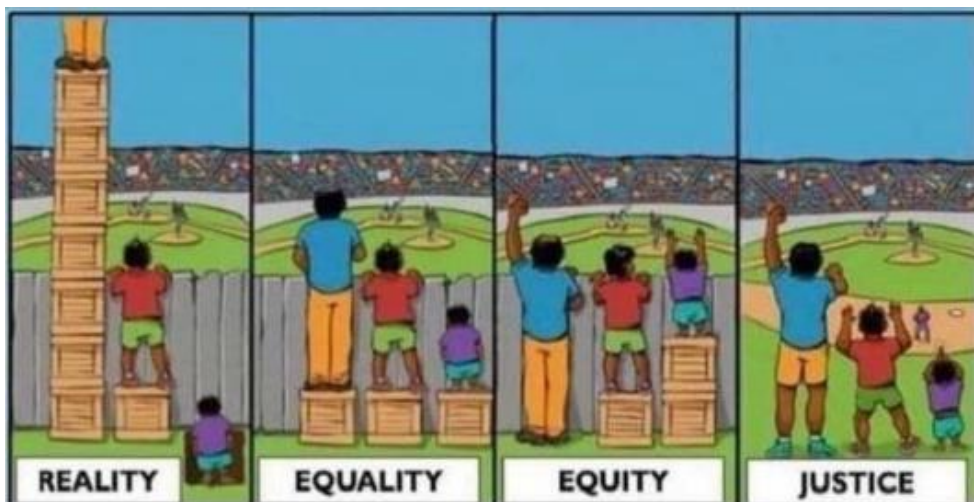
5. Why were single mothers judged to be at risk of poverty in 2019?  
\_\_\_\_\_  
\_\_\_\_\_

6. Why is the government not successful at solving the problem?  
\_\_\_\_\_  
\_\_\_\_\_  
\_\_\_\_\_  
\_\_\_\_\_

**What did reading the two texts teach you about getting the whole picture or 'the bigger picture'?**

\_\_\_\_\_  
\_\_\_\_\_  
\_\_\_\_\_  
\_\_\_\_\_

**Is there any way in which the following pictures can be related to the situation?**



### 3. Domestic violence

## Luxembourg NGO highlights domestic violence warning signs<sup>22</sup>

By Sandra Mélan - adapted for RTL Today|Update: 05.08.2022



**What are the warning signs of domestic violence? Who is likely to be affected and how do perpetrators proceed? VISAVI, a service from non-profit Femmes en Détresse (Women in Distress), explains all.**

Violence is power, exercised through the form of someone forcing another person to do things involuntarily. In the context of domestic violence, this usually takes place during or after a relationship. Anyone can end up in an abusive relationship - so what are the warning signs?

5 Many domestic violence situations start gradually, usually in the form of emotional abuse, obsessive jealousy, and control. These usually go hand in hand with manipulation to ensure the victim does not immediately become aware of what is going on.

10 Monique Lucas, of VISAVI, a service offered by non-profit Femmes en Détresse (Women in Distress), says most victims only realise they have been in a long-term abusive relationship when they start to recognise something is wrong, which can take time. In the early stages of a relationship, people tend to ignore the smaller warning signs in favour of idealising their partner.

#### **What are the first signs?**

A good example of a potentially abusive relationship is when a partner seeks to isolate the victim from their friends and family members, says Lucas.

15 In this instance, the victim's wish to see their loved ones is often denigrated by their partner, in the form of wishing to just spend time alone as a couple.

Typically, the partner will manipulate the situation by balancing a negative statement - for example, forbidding the victim from going out to dinner with friends - with a positive, such as stating how happy they are to just spend time together as a couple all the time. The victim is more likely to retain the positive statement.

20 Jealousy and control are other signs, which can be accompanied by no longer having space for oneself, low self-esteem, or low self-confidence. Lucas explains that these are likely to occur as the victim adapts themselves to their abusive partner, as they believe the partner is always right. She adds that it is important to listen to one's intuition.

#### **What are the different forms of violence?**

25 Abusers are likely to exercise more than one form of violence, according to Lucas. Domestic violence frequently starts with emotional abuse but may also take the form of financial abuse and sexual violence. The best-known form is physical violence, which leaves obvious traces.

#### **Psychological violence**

30 Psychological violence is designed to target the victim's self-confidence, Lucas explains. Little by little, the victim is more likely to give in, less likely to argue back, and no longer feels as though they can express their own opinion. The abuser may use tactics such as frequent criticism, ridicule and humiliation, as well as insults, to wear their victim down.

Statements such as "You know nothing, you are nothing, you know nothing, that's why it's good that you have me", all leave invisible traces. All the actions of the perpetrator of the violence are

---

<sup>22</sup> [RTL Today - Women in Distress: Luxembourg NGO highlights domestic violence warning signs](#)

often carried out in a subtle way, so that the victim does not notice it immediately, says Lucas.

35 **Financial abuse**

It is worth noting that everyone has the right to possess their own bank account - a fact which is not as widely known as you might think. Equally, Lucas emphasises that no one is obliged to grant anyone, partner or otherwise, the power of attorney for a bank account if they do not so wish (= the legal right to make financial or business decisions for someone else, especially because they are old or too ill to deal with things themselves).

40

Abusive partners often use misinformation to financially abuse their partner, and therefore gain control - for example, making the victim supply them with receipts after shopping. Others may also force a partner to take out an unwanted loan. The abusive partner may use psychological or physical violence to force the victim to submit to financial abuse.

45

At VISAVI, support staff are often confronted with women who were not informed of a loan when they signed paperwork, says Lucas. There is frequently a lack of information not just on the subject of the loan, but also on the topic of financial obligations or their finances in general. In many cases, victims of financial abuse do not have access to their own money and must therefore ask their partner for money if they require it.

50 **Sexual violence**

The most common form of sexual violence is rape - but it is not the only form.

Lucas clarifies that any act which is performed without consent falls under the umbrella of sexual violence. This can include degrading sexual comments, or being forced to watch pornography.

55

It is vital that victims know they have the right to say no, she emphasises, and that they can decide for themselves whether they participate in any acts. Marriage is not an obligation to submit, she adds.

**Physical violence**

Anything that leaves more or less visible traces counts as physical violence: hitting, holding, shaking, pushing, throwing down the stairs, burning with a cigarette butt. Here too, an additional psychological violence is exerted, says Lucas.

60

All of these forms of violence reinforce the victim's feelings of fear and diminish their self-confidence, she explains, as the abuser seeks to demonstrate their power.

**Read the text. then decide if the sentences below are true or false. Tick the respective box. If there is not enough information in the text, tick '?'.**

	True	False	?
1. Victims of domestic violence realise immediately what is going on.	<input type="checkbox"/>	<input type="checkbox"/>	<input type="checkbox"/>
2. Abusive partners often try to isolate their victim socially.	<input type="checkbox"/>	<input type="checkbox"/>	<input type="checkbox"/>
3. Jealousy is a sign of true love.	<input type="checkbox"/>	<input type="checkbox"/>	<input type="checkbox"/>
4. Psychological violence aims at destroying the victim's self-confidence.	<input type="checkbox"/>	<input type="checkbox"/>	<input type="checkbox"/>
5. In a relationship both partners have the right to have their own bank account.	<input type="checkbox"/>	<input type="checkbox"/>	<input type="checkbox"/>
6. Women usually grant the power of attorney for their bank accounts to their husbands.	<input type="checkbox"/>	<input type="checkbox"/>	<input type="checkbox"/>
7. Sex performed without consent is rape, even within marriage.	<input type="checkbox"/>	<input type="checkbox"/>	<input type="checkbox"/>
Domestic violence that leaves traces is considered as physical violence.	<input type="checkbox"/>	<input type="checkbox"/>	<input type="checkbox"/>

## 4. Domestic violence<sup>23</sup>



### Helpline «Häuslech Gewalt – Violence domestique – Domestic violence»

For women and men

Tél.: 2060 1060 (7j/7, 12.00 – 20.00 heures)

[info@helpline-violence.lu](mailto:info@helpline-violence.lu)

[www.helpline-violence.lu](http://www.helpline-violence.lu)

### Aktioun Bobby

The "Aktioun Bobby" Police service offers telephone assistance to children who are victims of physical, psychological or sexual violence:

Telephone: (+352) 123 21



If you have been the victim of violence perpetrated by someone you live with, or if you have witnessed such violence being inflicted on someone close to you, contact the Police immediately or go to the police station of your choice.

You will be looked after by competent police officers who are well trained in this area. Where possible, women will be seen by a female officer.

All physical and/or psychological harm is punishable by law; if a person is threatened or mistreated by someone close to them whom they live with, the Police can evict the perpetrator from the home on the basis of indicative evidence and with the authorisation of the State Prosecutor (Law of 8 September 2003 on domestic violence).

For the entire duration of the eviction order, the evicted person is prohibited from entering the home or its outbuildings and will face criminal penalties if they do. The Police confiscate the keys to the home and its outbuildings from the evicted person.

The Domestic violence victim support service created within the framework of the law on domestic violence contacts victims to inform them of their rights and the possible actions they can take and offers support and advice.

Alongside the eviction process, the Prosecutor's Office decides what subsequent steps will be taken in domestic violence cases. It can issue a direct summons for the perpetrator of the violence to appear before the criminal court, open a judicial investigation against them, or drop the criminal case - with or without a written warning to the perpetrator. No criminal mediation can take place, however.

#### **For more information, go to**

- [violence.lu](http://violence.lu)
- [lu.usembassy.gov/resources-for-victims-of-domestic-violence/https://lu.usembassy.gov/resources-for-victims-of-domestic-violence/](https://lu.usembassy.gov/resources-for-victims-of-domestic-violence/) (cf. Appendix 2)

<sup>23</sup> Adapted from [Domestic violence - Victim support - Portail de la Police Grand-Ducale - Luxembourg \(public.lu\)](https://police.public.lu/en/aide-aux-victimes/violence-domestique.html)  
<https://police.public.lu/en/aide-aux-victimes/violence-domestique.html>

**Read the text. Then complete the sentences below by choosing the best options (a, b or c). Sometimes more than one answer is possible.**

1. Domestic violence can be reported to the police by anyone who ...
  - a is experiencing such violence by someone else they live with.
  - b. has witnessed instances of such violence in his immediate environment.
  - c. has heard rumours about domestic violence being inflicted on someone else.
  
2. The perpetrators of domestic violence are ...
  - a men.
  - b. women.
  
3. For the police to take action there has to be ...
  - a a formal complaint by the victim.
  - b. a permission by the State Prosecutor.
  - c. obvious evidence of domestic violence.
  
4. The victims of domestic violence are looked after by
  - a any police officer who is on duty.
  - b. competent police officers who have been trained for the task.
  - c. female officers if possible
  
5. According to the text, ... within a marriage is against the law.
  - a financial abuse
  - b. physical violence
  - c. psychological violence
  
6. When perpetrators of domestic violence have been evicted from home, ...
  - a they can return home to get a change of clothes.
  - b. they can return home with the permission of the victim.
  - c. they must not return home for the time of the eviction.
  
7. The special victim support service provides ...
  - a information on actions victims can take following to the eviction.
  - b. information on ways to stop the procedures against the perpetrator.
  - c. psychological therapies for the victims of domestic violence.
  
8. The Prosecutor's Office **CANNOT** ...
  - a order the perpetrator to appear in a court of law.
  - b. stop the investigations against the alleged perpetrator.
  - c. organise criminal mediation between the victim and the perpetrator.

## 5. LGBTQ +

### RAINBOW INDEX

## Luxembourg among most LGBTQ-



Written by Cordula Schnuer

Published on 13.05.2022



Photo: Shutterstock

## friendly countries in Europe<sup>24</sup>

**Luxembourg ranks fifth in the latest edition of the Rainbow Europe index and although it remains one of the most progressive countries on LGBTQ+ rights it is being overtaken by other nations.**

The Rainbow Europe index assesses 49 countries in Europe, including all 27 EU members, in seven different areas, including equality and non-discrimination, family, hate crime and hate speech, legal gender recognition, intersex bodily integrity, civil society space, and asylum.

The Grand Duchy scored 68.03%, with 100% representing full equality and respect of human rights.

Malta (92.02%) topped the list, followed by Denmark (73.78%), Belgium (71.51%) and Norway (68.30%) also in the top five. Belarus (12.06%), Russia (8.45%), Armenia (7.5%), Turkey (4%) and Azerbaijan (2.41%) closed the ranking, with a 0% score representing gross violations of human rights and discrimination.

Luxembourg lost marks, for example, for not having introduced a ban on conversion therapy. Prime minister Xavier Bettel (DP), who is gay, has previously said that such a ban isn't necessary as conversion therapy isn't practiced in Luxembourg. The PM in 2019 reportedly skipped a dinner with Israel's ambassador to Belgium in Luxembourg after the country's education minister in remarks had endorsed (=supported) the practice.

The grand duchy also lacks effective laws and policies to combat anti-intersex hate crime, the Rainbow Europe index said. Luxembourg also does not currently recognise non-binary gender identities, another point of criticism, although it does allow people to legally change their gender on the basis of self-determination.

LGBTQ+ rights group Rosa Lëtzebuerg had previously criticised a formulation in the reform of the grand duchy's constitution, which states that "women and men are equal in rights and duties", saying this would cement a binary model.

Already in a 2020 report, the OECD had criticised that Luxembourg does not automatically recognise as a legal parent the same-sex partner of a woman who gives birth through medically assisted insemination or in vitro fertilisation. This also lost Luxembourg marks in the Rainbow Europe index.

As Luxembourg has failed to make significant progress on these gaps in its legislation it has dropped from third to fifth place in the Rainbow Europe index.

"With no legal changes in favour of LGBTIQ+ people in Luxembourg already in 2020, this trend continued in 2021," said LGBTIQ+ rights group Rosa Lëtzebuerg in a statement. "Long overdue projects such as the bill to ban medical interventions on children without their informed consent, which the government still wanted to get through parliament by the end of 2021, continue to be a long time coming."

Parenthood recognition and a gay conversion therapy ban would be "relatively easy to implement," the group said and would improve Luxembourg's score.

"The Rainbow Index indicates how much a government cares about the rights of LGBTIQ+ people. This has a direct impact on the reality of life for queer people in Luxembourg," it said. "Furthermore, the positioning also has an influence on the external perception of Luxembourg. Rosa Lëtzebuerg would therefore like to call on the government to become aware of Luxembourg's role as a pioneer in human rights and to address the outstanding demands."

<sup>24</sup> Adapted from [Domestic violence - Victim support - Portail de la Police Grand-Ducale - Luxembourg \(public.lu\)](#) [Domestic violence - Victim support - Portail de la Police Grand-Ducale - Luxembourg \(public.lu\)](#)

**Find words and expressions in the text which mean the following**

1. to evaluate \_\_\_\_\_
2. to win or get points, goals ... in a game, competition, game, or test \_\_\_\_\_
3. the position of someone or something on a scale that shows how good or important they are in relation to other similar people or things, especially in sports \_\_\_\_\_
4. an official rule that says that something is not allowed \_\_\_\_\_
5. which has a gender identity that is not simply male or female \_\_\_\_\_
6. the right or ability of people to control their own fate and make decisions for themselves \_\_\_\_\_
7. to make something stronger and longer lasting \_\_\_\_\_
8. to fall \_\_\_\_\_
9. permission from a patient for a medical professional to carry out treatment, with complete understanding of the possible risks and consequences \_\_\_\_\_
10. to make sure that something that has been officially decided begins to happen \_\_\_\_\_

**Decide if the sentences below are true or false. Tick the respective box. If there is not enough information in the text, tick '?'.**

	<b>True</b>	<b>False</b>	<b>?</b>
1. The Rainbow Europe Index compares what rights the members of the LGBTQ+ community have in different European countries.	<input type="checkbox"/>	<input type="checkbox"/>	<input type="checkbox"/>
2. Luxembourg used to have a better ranking in the Rainbow Europe index.	<input type="checkbox"/>	<input type="checkbox"/>	<input type="checkbox"/>
3. The Rainbow Europe Index focuses exclusively on the member states of the EU.	<input type="checkbox"/>	<input type="checkbox"/>	<input type="checkbox"/>
4. The ranking of the different countries is determined by scores they obtain in seven main categories.	<input type="checkbox"/>	<input type="checkbox"/>	<input type="checkbox"/>
5. Russia and Turkey are amongst the five worst countries in Europe when it comes to LGBTQ rights.	<input type="checkbox"/>	<input type="checkbox"/>	<input type="checkbox"/>
6. Conversion therapy is a common practice in Luxembourg.	<input type="checkbox"/>	<input type="checkbox"/>	<input type="checkbox"/>
7. Luxembourg recognises the existence of gender identities other than male or female.	<input type="checkbox"/>	<input type="checkbox"/>	<input type="checkbox"/>
8. The grand duchy's new constitution applies a binary model with regards to the population without considering the child's position.	<input type="checkbox"/>	<input type="checkbox"/>	<input type="checkbox"/>
9. In Luxembourg parents and doctors can simply decide to transform a child's genitals surgically to adapt them to a standard.	<input type="checkbox"/>	<input type="checkbox"/>	<input type="checkbox"/>
10. Rosa Lëtzebuerg would like the Luxembourg government to take a more active role in the implementation of the rights of LGBTQ+ people.	<input type="checkbox"/>	<input type="checkbox"/>	<input type="checkbox"/>

## 6. Euthanasia and assisted suicide<sup>25</sup>



Luxembourg law on euthanasia and assisted suicide offers patients the option to die when their suffering is considered to be unbearable. Thus, patients in this situation are given the freedom to choose how their lives will end, and the doctors who agree to comply with their request for euthanasia or assisted suicide are protected from prosecution. Indeed, there are strict legal conditions for ensuring the transparency and control of medical procedures to end life voluntarily.

For the purposes of legal application, euthanasia is defined by law as a medical act whereby a doctor intentionally ends the life of another person, at that person's express and deliberate request. Assisted suicide, in the same conditions, consists of helping another person to end their own life, in particular by providing them with the means of doing so.

In all cases, before euthanasia or assisted suicide can be performed, the doctor must fulfil certain formal and procedural conditions (e.g. conduct several interviews with the patient, etc.). If they object for reasons of conscience, the doctor in question may refuse to perform euthanasia or assisted suicide. In that case, they are obliged to inform the patient and/or their appointed 'person of trust' within 24 hours, specifying the reasons for their refusal.

### Who is concerned

Requests for euthanasia or assisted suicide may be filed by anyone:

- who has an incurable medical condition arising as a result of an accident or illness. The cause of the incurable medical condition is irrelevant. The patient's health problems may result from any serious, incurable and irreversible affliction which leads to unbearable physical or mental suffering.
- who wishes to make end-of-life arrangements to avoid having to confront such a situation in the future.

Patients who reside abroad and have a GP (general practitioner) in Luxembourg may make end-of-life arrangements and have them recorded in their medical file. There are no residency or nationality conditions attached to having such information recorded in one's medical file, or to any of the other fundamental and formal conditions. However, the GP in question must have been the patient's doctor for a sufficiently long, continuous period of time.

### Prerequisites

For a request for euthanasia or assisted suicide to be considered legal, the patient must:

- be conscious at the time of the request.
- be of legal age with legal capacity to make their own decisions (i.e., they must not have been ruled incapable of making their own decisions by the court).
- have made the decision without any outside pressure.
- have an incurable medical condition, with no prospect of improvement, arising as a result of an accident or illness.
- be undergoing constant and unbearable physical and/or mental suffering as a result of that condition, with no hope of improvement.

Minors, persons of legal age under guardianship or protection, and legally incapable persons may not legally request euthanasia or assisted suicide, nor may their parents, guardians or trustees make such a request on their behalf.

<sup>25</sup> <https://guichet.public.lu/en/citoyens/famille/euthanasie-soins-palliatifs/fin-de-vie/euthanasie-assistance-suicide.html>

## How to proceed

### Requesting euthanasia or assisted suicide in case of an advanced illness

The usual case is a direct request for euthanasia by the patient themselves. The request must be made by a patient who is of legal age, with full legal capacity, and conscious at the time of application, whose medical state meets all the conditions required for performing euthanasia.

The patient's direct request must be expressed in writing, mentioning all their personal details, and be dated and signed.

If the patient is permanently physically incapable of writing and signing the request (owing to paralysis, for example), the latter can be formalised in writing by a person of legal age of the patient's choice, in the presence of the patient's GP, whose name must appear in the document. The person chosen by the patient must specify in the document that the patient is permanently physically incapable of writing the request themselves, stating the reason for that incapability, and sign and date the request. The document does not need to be formally recorded.

The patient may withdraw their request at any time. In that case, it will be taken out of their medical file and returned to the patient.

### Advance request for euthanasia or assisted suicide in the form of 'end-of-life arrangements'

'End-of-life arrangements' are a euthanasia request made in advance, in anticipation of the possibility that the patient could, at some later point in their life, find themselves in an irreversible state of unconsciousness—irreversible from the point of view of scientific knowledge at the time—or suffer from the incurable effects of a serious accident or illness, considered as irreversible from the point of view of scientific knowledge at that time.

Any person of legal age having full legal capacity may, in anticipation of a situation where they are no longer able to express their will, set down in writing, as their end-of-life arrangements, the circumstances and conditions in which they wish to undergo euthanasia.

End-of-life arrangements may also include a specific section where the declarant sets out the specific arrangements to be made for their burial/cremation, etc., and for their funeral ceremony.

In drafting their end-of-life arrangements, any person may appoint a 'person of trust' of legal age. The 'person of trust' will be the patient's spokesperson if the patient can no longer express their wishes. The role of the 'person of trust' is not to express their own personal opinion, but instead to inform the GP of the patient's wishes in accordance with their last declarations on the subject.

### Writing one's end-of-life arrangements

The end-of-life arrangements must be set out in writing, and dated and signed by the patient in question, unless that person is permanently physically unable to write and sign the declaration.

If the person in question is permanently physically unable to write and sign their end-of-life arrangements, their wishes may be formalised by a person of legal age of their choice in the presence of 2 witnesses. In that case, the end-of-life arrangements must specify that the patient is incapable of writing and signing the document and mention the reasons why.

The end-of-life arrangements must be dated and signed by the person who wrote the declaration, the witnesses and, where applicable, by the 'person of trust'. A medical certificate attesting to the patient's permanent physical incapacity must be attached to the end-of-life arrangements.

### Changing one's end-of-life arrangements

A person's end-of-life arrangements may be restated, withdrawn or updated at any time. Such changes must be recorded. However, the patient's last known wishes always take precedence, and euthanasia must not be performed if the doctor becomes aware of an expression of the patient's will, occurring after the duly recorded end-of-life arrangements, in which they retract their wishes to undergo euthanasia.

### Having one's end-of-life arrangements legally recorded

The end-of-life arrangements, and any changes to them, must be legally recorded with the National Control and Assessment Committee (Commission nationale de contrôle et d'évaluation).

There is no time limit on the validity of a person's end-of-life arrangements, but the National Control and Assessment Committee is required to seek confirmation of the patient's wishes once every 5 years from the date of filing.

## Lexis - Ways of killing

*In English, terms for types of killing often end in the suffix ‘-cide’.*

*Match the words for the different kinds of killing (1-17) with the definitions (a-p). There is an example (0,o)*

- |                 |   |
|-----------------|---|
| 0. femicide     | a. the act of intentionally causing one’s own death                                       |
| 1. fratricide   | b. the act of killing a brother   |
| 2. genocide     | c. the act of killing a child within the first year of its life                           |
| 3. herbicide    | d. the act of killing a person  |
| 4. homicide     | e. the act of killing a sister  |
| 5. infanticide  | f. the act of killing one’s mother  |
| 6. matricide    | g. an agent that kills unwanted plants, a weed killer                                     |
| 7. parricide    | h. an agent used to kill parasitic intestinal worms                                       |
| 8. pesticide    | i. a contraceptive agent to render sperm inert and prevent fertilisation                  |
| 9. regicide     | j. a general term to describe an agent used to destroy or repel a pest                    |
| 10. sororicide  | k. the killing of one’s mother, father or another close relative                          |
| 11. spermicide  | l. the killing of a ruler   |
| 12. suicide     | m. the killing of a tyrant  |
| 13. tyrannicide | n. the systematic extermination of an entire national, racial, religious, or ethnic group |
| 14. vermicide   | o. the systematic killing of women  |

Further similar words: fungicide, insecticide, patricide, etc.

*Write your answers here*

0	1	2	3	4	5	6	7	8	9	10	11	12	13	14
o														

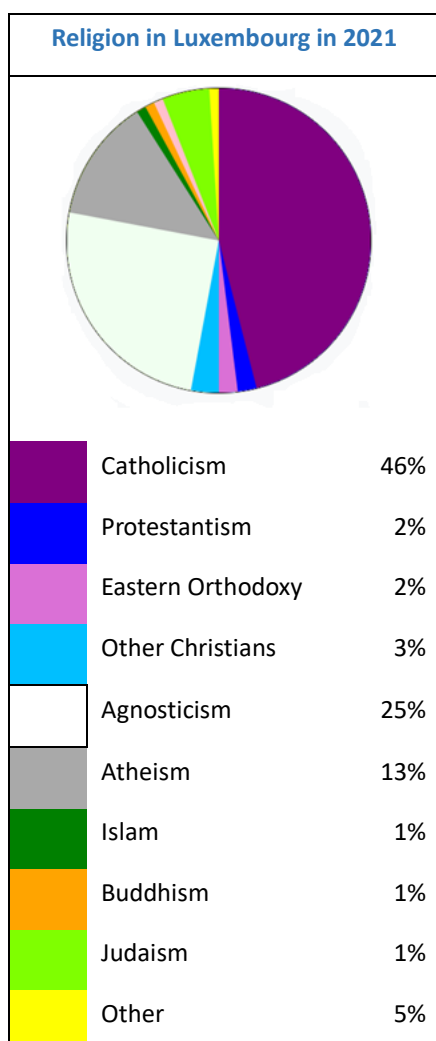
**Are the sentences below true or false and tick the respective box.**

**If there is not enough information in the text, tick ‘?’.**

- |   | True                     | False                    | ?                        |
|---|--------------------------|--------------------------|--------------------------|
| 1. Doctors of patients who have a terminal illness and are in a lot of pain have to perform euthanasia or help them commit suicide on demand. | <input type="checkbox"/> | <input type="checkbox"/> | <input type="checkbox"/> |
| 2. The law on euthanasia and assisted suicide only applies to residents of Luxembourg.  | <input type="checkbox"/> | <input type="checkbox"/> | <input type="checkbox"/> |
| 3. If the patient is a child or a teenager, his parents or his guardian can ask for the law to be applied.                                    | <input type="checkbox"/> | <input type="checkbox"/> | <input type="checkbox"/> |
| 4. Euthanasia or assisted suicide cannot be performed when the patient is unconscious.  | <input type="checkbox"/> | <input type="checkbox"/> | <input type="checkbox"/> |
| 5. Euthanasia or assisted suicide must be requested when the ‘patient’ is still healthy.  | <input type="checkbox"/> | <input type="checkbox"/> | <input type="checkbox"/> |
| 6. End-of-life arrangements can include instructions on how a person wants to be buried.  | <input type="checkbox"/> | <input type="checkbox"/> | <input type="checkbox"/> |
| 7. A so-called ‘person of trust’ can take decisions on behalf of the patient.   | <input type="checkbox"/> | <input type="checkbox"/> | <input type="checkbox"/> |
| 8. People are free to record their end-of-life arrangements legally.  | <input type="checkbox"/> | <input type="checkbox"/> | <input type="checkbox"/> |

## XIII. RELIGION IN LUXEMBOURG

### 1. Religion in Luxembourg<sup>26</sup>



Christianity is the largest religion in Luxembourg, with significant minorities of non-religious people and adherents of other faiths.

As of 2018, 73.2% of Luxembourg's population adhere to forms of Christianity (63.8% are Catholics, 1.8% are Protestants, 3.0% are Orthodox Christians while 4.6% adhere to other Christian denominations). 2.6% of the population are Muslims and 0.6% are followers of other non-Christian religions. 23.4% of the population do not have a religion.

#### Demographics

Since 1979 it has been illegal for the government to collect statistics on religious beliefs or practices.

According to a 2010 Pew Research Center study 70.4% are Christian, 2.3% Muslim, 26.8% unaffiliated and 0,5% other religions.

According to the Eurobarometer Poll 2005,

- 44% of Luxembourgish citizens responded that "they believe there is a God".
- 28% answered that "they believe there is some sort of spirit or life force".
- 22% answered that "they do not believe there is any sort of spirit, God, or life force".

#### State intervention

Luxembourg is a secular state, but the Grand Duchy recognises and supports several denominations, in exchange for which, the state is allowed a hand in their affairs. This status, first afforded to the Catholic Church, stems from Napoleon's Concordat of 1801, the principles of which have continued to apply to Luxembourg, despite its separation from France in 1815 and its subsequent Dutch ownership.

Despite having the same roots as France's official position of 'laïcité', Luxembourg's approach to religion has taken a different direction in the past 200 years, reducing the separation of church and state, not increasing it.

The state currently recognises the Catholic Church, Judaism, Greek and Russian Eastern Orthodox Christianity, and Protestantism as officially mandated religions. In 2003, representatives of Islam, Anglicanism, and Romanian and Serbian Orthodox Christianity engaged in discussions to be conferred similar status.

A process began in the mid-2000s [around 2005!] in which increasingly the tight entanglement between church and state in Luxembourg was questioned. This was partially stimulated by several events, such as the debate on Catholic Church sexual abuse or the Grand Duke's religiously motivated refusal to sign a euthanasia bill adopted by Parliament. This led to the 2007 formation of an alliance of eight organisations, who made the separation of church and state their goal. In 2010, a petition [...] that demanded the separation of church and state in Luxembourg was launched. It was supported by, amongst others, the youth wings of several political parties. The 'Allianz vun Humanisten, Atheisten an Agnostiker', founded in 2010, became one of the most vocal advocates of secularism in Luxembourg.

In January 2015, the government concluded a new convention with the recognised religions, regrouping the Greek, Romanian, Serbian and Russian Orthodox Churches in one Orthodox Church in Luxembourg [...] and adding the Anglican Church and the Muslim Community of the Grand-Duchy of Luxembourg to the list of recognised religions. This convention has not yet entered into force, however. Moreover, seven non-religious organisations demanded a say in the negotiations about the future financing of religions by the state and the continuation of religion classes in public schools, both of which they demanded to be abolished.

<sup>26</sup> Adapted from [https://en.wikipedia.org/wiki/Religion\\_in\\_Luxembourg](https://en.wikipedia.org/wiki/Religion_in_Luxembourg)

**Note:**

In 2016, the separation of the Church and the State was decided. Ever since religious classes in public schools have been suspended. The different religious faiths which receive financial support by the government were given twenty years to become financially independent.

**The text is about 'religion', which other words are used in the text to refer to religion.**

- 1.           *belief*
- 2.           *faith*

**What word is used to say that religion is not or should not be involved in the organisation of society, education, etc.?**

**Noun** \_\_\_\_\_ **Adjective** \_\_\_\_\_

**Read the text and find words used to describe the following kinds of people<sup>27</sup>**

- 1. people who strongly support a particular set of ideas \_\_\_\_\_
- 2. people who strongly support a particular set of ideas \_\_\_\_\_
- 3. inhabitants of a particular place \_\_\_\_\_
- 4. inhabitants of a particular place \_\_\_\_\_
- 5. people appointed to act for, or to represent, a group \_\_\_\_\_

**Is the word 'citizens' well-chosen? Explain why they might be a problem. Go to [www.wordhippo.com](http://www.wordhippo.com) to find synonyms or near synonyms.**

- 1. \_\_\_\_\_
- 2. \_\_\_\_\_

**The text mentions political agreements and law texts. Which words are used to refer to them?**

- 1. \_\_\_\_\_
- 2. \_\_\_\_\_
- 3. \_\_\_\_\_

**Compare the figures of the pie chart with the figures in the text. What do you notice? Explain.**

\_\_\_\_\_

\_\_\_\_\_

\_\_\_\_\_

\_\_\_\_\_

\_\_\_\_\_

<sup>27</sup> <https://www.wordhippo.com/>



## 2. Churches In Luxembourg Struggle With Separation From State<sup>28</sup>

[April 29, 2022/ Nicholas Zalewski](#)

While the separation of church and state has existed for centuries in various European countries, it has only been recently established in Luxembourg. On the 26th of January, 2015 Luxembourg's government signed an agreement with religious groups that paves the way for a complete separation of church and state in two decades. The Roman Catholic Church will suffer the most from this agreement as it received the most financial support since it is Luxembourg's dominant religion. Currently, the salaries of those hired by the Roman Catholic Church before 2016 will continue to be paid by the government. In 2021 the government



paid 24.5 million euros in salaries, one million less than the previous year. Currently, there are 493 Catholic Churches and Chapels, and 356 are still owned by municipalities. 4 churches have already been desecrated meaning they will no longer be used by the church for services. Funding will decrease gradually until the Catholic Church is completely independent. The national government is also currently still providing subsidies to Muslim, Anglican, and Jewish religious groups in Luxembourg. Eventually, these religious groups will have to become completely financially independent which is challenging given the pandemic and ongoing invasion of Ukraine. There is little that can be done immediately to lower energy costs, only adding to the urgency of increasing revenue for the church fund.

In order to increase revenue, the church is shifting its priorities. The Roman Catholic Church in Luxembourg planned on investing in social housing as part of its Church fund, which will be its new form of financing rather than the government. While social housing may be viewed as a Christian way to raise money, it appears that it will not be economically feasible. The pandemic and invasion of Ukraine have created economic difficulties for everyone including Luxembourg's Catholic Church which is just learning how to be independent. Instead, the Catholic Church will look into owning and leasing out commercial properties as a source of financing.

The relationship between the Church and the State started under Napoleon's Concordat of 1801 when Luxembourg was part of France. Despite having the same roots as France's official position of laicity, Luxembourg would wait 110 years to separate the church from the state. The Catholic Church's domination of Luxembourg to this day with just shy of 58 percent of the population being part of the church can be explained by the ban of the protestant church until 1768 in Luxembourg. Today Luxembourg is more religiously diverse, particularly as a result of immigration. 47 percent of the population in Luxembourg in 2020 were immigrants, the highest all of EU member states. Besides Catholics and Protestants, there are also Muslims, Jews, Anglicans, and Orthodox. Along with an increase in the variety of religions, the portion of Luxembourg's population that has no religious beliefs has increased as well.

The rise of atheism in Luxembourg can partially be credited with the move to dissolve the government's relationship with religion. This rise has been relatively quick as only 20 years ago 94 percent of the population in Luxembourg was officially part of the Catholic Church meanwhile in 2014 this dropped to 58 percent identifying as Catholic. It is difficult to get more accurate data based on how people are officially registered as the Luxembourgish government has been banned from collecting data on religious affiliation since 1979. [Fraiheet.lu](http://Fraiheet.lu) was created to inform people about how to dissolve their membership with the Catholic church and what potential consequences are if they choose to officially terminate their membership. Some potential drawbacks of giving up church membership are not being able to take part in church rituals such as a religious wedding, being a sponsor for a baptism, or having a priest present at their burial service.

The separation of church and state is continuing as scheduled, but it is up to the various religions and particularly the Catholic Church to become financially independent in order to survive. Current circumstances will not make it easy but instead add to the difficulty of achieving financial independence. Various religions will not only have to battle rising costs adding to how much money they need to operate but a decrease in believers who would potentially donate money to continue operations.

<sup>28</sup> Adapted from <https://www.moderntreatise.com/international/2022/4/29/european-central-churches-in-luxembourg-struggling-with-separation-from-state>

1. In Luxembourg the separation of state and church ...
  - a has been in place since 1801.
  - b. came into effect on 26<sup>th</sup> January 1915.
  - c. will be done progressively over twenty years.
  
2. Most of the Catholic churches and chapels in Luxembourg belong to ...
  - a the Catholic Church.
  - b. the municipalities
  - c. the government.
  
3. Currently the Luxembourg government offers financial support to ...
  - a all the religious communities in the country.
  - b. the Catholic church only.
  - c. the Christian, the Jewish and the Muslim communities.
  
4. The Catholic Church in Luxembourg plans to save / make money by ...
  - a asking its members for more substantial donations.
  - b. cutting the salaries of the people they hire.
  - c. investing in social housing.
  
5. Nowadays there are ... different religious faiths in Luxembourg than in the past.
  - a fewer
  - b. more
  - c. the same number of
  
6. Nowadays there are ... people who do **NOT** practice a specific religious faith.
  - a fewer
  - b. more
  - c. the same number of
  
7. It is difficult to obtain precise figures on religion in Luxembourg because ...
  - a religion is considered a private matter and people refuse to disclose their religious beliefs.
  - b. such data is considered to be useless in a modern market economy.
  - c. the systematic recording of religious, philosophical or denominational affiliation by the government is forbidden by law.
  
8. [Fraiheet.lu](#) ...
  - a encourage people to put an end to their membership to the Catholic church.
  - b. encourage people to become members of the Catholic church.
  - c. warn people that leaving the Catholic churches will have a lot of disadvantages for them.



## Transcript: At the chemist's

- Chemist** Hello. How can I help you?
- Customer** Hello, I need something against hay fever urgently.
- Chemist** Do you have a prescription from your doctor?
- Customer** No, I haven't. I normally just buy a strong antihistamine over the counter.
- Chemist** Well, I'm afraid the most effective antihistamines are not prescription-free in Luxembourg, after all they can have some serious side-effects.
- Customer** Oh no, I only just moved to Luxembourg. I really need some medicine now. How can I find a good doctor so quickly? [Hmmm,] I guess I could go to the emergency service of a hospital.
- Chemist** Well, I would not recommend the emergency service of a hospital for such a simple emergency. If it is true that emergency care is available free of charge to everybody at certain large hospitals, it is also true that you look at spending hours on end in the hospital's waiting room for your prescription.
- Customer** What else can I do?
- Chemist** If you are covered by some kind of medical insurance, you can either turn to one of three 'maisons médicales'. where general practitioners are on duty to provide after-hours treatment or treatment on weekends, or else, directly register with a general practitioner ideally near where you live.
- Customer** How can I actually find a general practitioner, then?
- Chemist** That shouldn't be a problem. There are several possibilities, the 'college médical' has lists of health professionals that you can search alphabetically or by specialty; on ReviewEuro you can get reviews of doctors operating in Luxembourg<sup>29</sup>; then, there are the yellow pages of Editus... but really these days most people use 'Doctena' to look for a doctor and manage their appointments. On Doctena, you can book appointments, change them or cancel them.
- Customer** Doctena?
- Chemist** 'Doctena' is a website that allows you to search for doctors by location, by speciality and by language.
- Customer** So, you mean, there are doctors who speaks fluent English.
- Chemist** Well, I would expect most doctors in Luxembourg to speak English reasonably well. But, just to be on the safe side, ask for a doctor who offers an English-speaking service in your search.
- Customer** What a shame, I haven't got an internet account yet.
- Chemist** Don't worry, you've got a smart phone. Just download the Doctena app to your mobile and do whatever you need to do from there.
- Customer** All right. I will get a prescription and come back as soon as possible. Thanks for all this useful information.
- Chemist** My pleasure. See you tomorrow. Bye!
- Customer** Bye!

---

<sup>29</sup> <https://lu.revieweuro.com/luxembourg/doctor>

## Resources for Victims of Domestic Violence<sup>30</sup>

In Luxembourg, if your immediate safety is at risk, dial “113” or contact your local police department. In non-emergency situations, call the [violence.lu](https://www.violence.lu) helpline at +352 2060 1060 (7/7 12pm to 8pm).

### Counseling centers

Offer support and advice to women who are victims of bullying, sexual harassment, domestic violence or psychological abuse.

[Counseling Center Foyer Sud – Fraen a Nout](#) (by the Conseil National des Femmes Luxembourgeoises)

Services available from 8:00 a.m. to 8:00 p.m. Monday through Thursday and from 8:00 a.m. to 6:00 p.m. by phone  
41, rue de Luxembourg L-4220 Esch-sur-Alzette  
Tel.: +352 54 57 57 or +352 54 55 77

Assistance Services to victims of domestic violence – SAVVD (by Femmes en détresse asbl)

Services available on weekdays from 8:00 a.m. to 6:00 p.m. Tél. 26 48 18 62  
E-mail: savvd@fed.lu

[Counseling Center Visavi](#) (by Femmes en détresse asbl)

2, rue du Fort Wallis, L-2714 Luxembourg  
Tel: 49 08 77 – 1 | E-mail : visavi@fed.lu

[Centre de consultation](#) (by Fondation Pro-Familia)

5, rue de Zoufftgen, L-3598 Dudelange  
Tel: 51 72 72-42/-47 E-mail : femmes@profamilia.li

[Centre Ozanam](#) (by Fondation Maison de la Porte Ouverte)

64, rue Michel Welter, L-2730 Luxembourg  
Tel: 48 83 47

[Centre Ozanam Nord](#) (by Fondation Maison de la Porte Ouverte)

49, Grand Rue, L-9530 Wiltz  
Tel: 26 95 39 59

[Assistance to the Victims of Human Trafficking](#) (by Femmes en détresse asbl)

Tel: 26 48 26 31 et 621 316 919 | E-Mail: [traite.humains@visavi.lu](mailto:traite.humains@visavi.lu)

[Pathways to Safety International](#), 833-SAFE-833, [crisis@pathwaystosafety.org](mailto:crisis@pathwaystosafety.org)

To contact the toll-free crisis line from overseas, first dial your AT&T USADirect access number and at the prompt, enter phone number: 833-SAFE-833 (833-723-3833). Pathways to Safety International is a nongovernmental organization that specializes in serving Americans experiencing interpersonal and gender-based violence abroad.

### Shelters

There are 10 shelters in Luxembourg available to women, girls and mothers. Facilities must receive a prior notice. In an emergency situation, contact the Luxembourg police (113), who will contact a facility on your behalf.

[Fraenhaus Lëtzebuerg](#) (by Femmes en détresse asbl)

Tel: +352 44 81 81 (24/24) | E-mail : foyer@fraenhaus.lu

[Fondation Paula Bové](#) (by Fondation de la Porte Ouverte)

38, rue d’Anvers, L-1130 Luxembourg  
Tel: 49 10 17 | E-mail : fpbove@fmpo.lu

[Foyer Sud Fraen an Nout](#) (by the Conseil National des Femmes)

41, rue de Luxembourg L-4220 Esch-sur-Alzette Tel.: +352 54 57 57 or +352 54 55 77 | E-mail: foyersud@pt.lu

[Foyer Sichern](#) (Fondation de la Porte Ouverte)

2, rue Charles Rausch, L-7247 Walferdange  
Tel: 33 25 96 | E-mail : fsichern@fmpo.lu

---

<sup>30</sup> <https://lu.usembassy.gov/resources-for-victims-of-domestic-violence/>